

VANTAiO

# SAP Build Work Zone

Central entry point for  
applications, processes &  
information

Mainz, February 2025

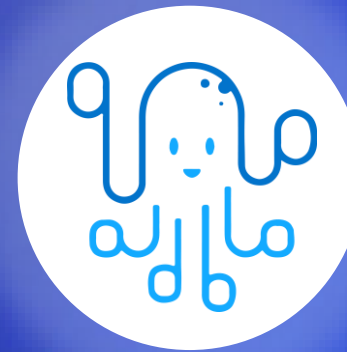


# What this presentation is about

## Content & Overview

This presentation will give you an overview of the **SAP Build Work Zone** product, which can be used to create a future-oriented digital workplace in the SAP environment.

In addition to the advantages of SAP Build Work Zone, there is a clearly structured presentation of the **differences** between the "Standard" and "Advanced" editions.



# SAP Build Work Zone



# VANTAiO at a glance

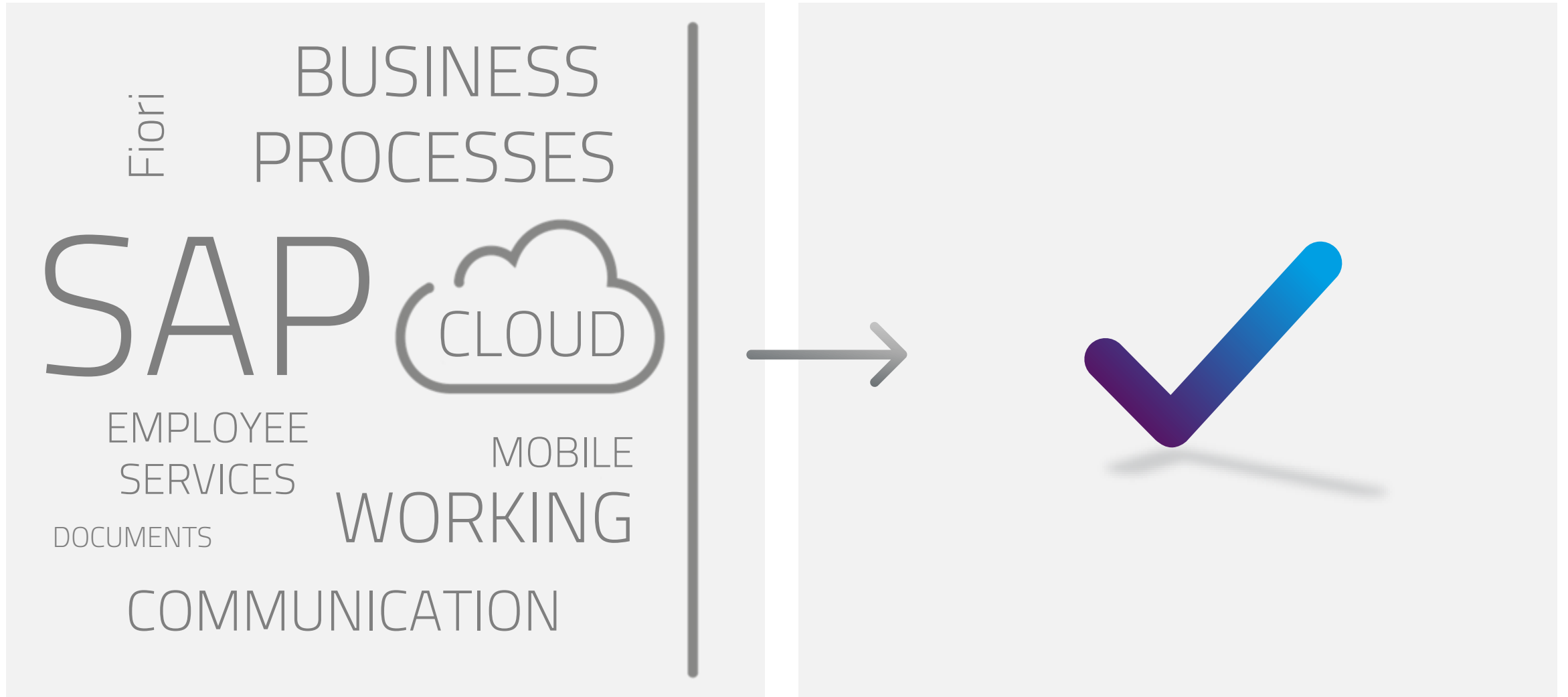
Your #1 for digital workplaces with SAP

- › Extensive and **long-standing experience** (> 23 years) in the SAP portal environment
- › Provider of **software and solutions** that enable the optimal use of SAP Portal software in companies **since 2003**.
- › Intensive focus on a **high user experience** of the software ("Only use generates benefit").
- › Over **350 customers** and experience from **> 600 SAP projects**: Reference customers from many different industries and different company sizes.
- › Efficient **support organization** and supplementary **professional services** for smooth operation of our solutions.
- › Company locations: Mainz and Siegburg



# Our claim: **Simple** implementation of complex requirements

Efficient. User-centered. With SAP.





“

VANTAiO always focuses on customer benefit. With practical solutions based on SAP.

**MARKUS MARENBACH,  
MANAGING DIRECTOR**

“

With VANTAiO, you can rely on over 20 years of experience with digital workplaces with SAP.

**STEFAN BOHLMANN,  
FOUNDER**

# Good customer acceptance on the market

## Project examples with SAP Work Zone



INTERSPORT Germany operates a messaging system based on **SAP BTP** for all employees of the approx. 1.500 INTERSPORT stores in Germany.



FFT uses the SAP Work Zone for its **process-driven application** portal. Various SAP technologies, including on-site, are **integrated** into the system.



The DRK NSTOB uses the new SAP BTP platform for a **communication and messaging system** for mobile blood donation staff and at the head office.



Based on the SAP Build Work Zone Advanced Edition, ILLIG has created an innovative **digital workplace** that focuses on information and digitalized processes.

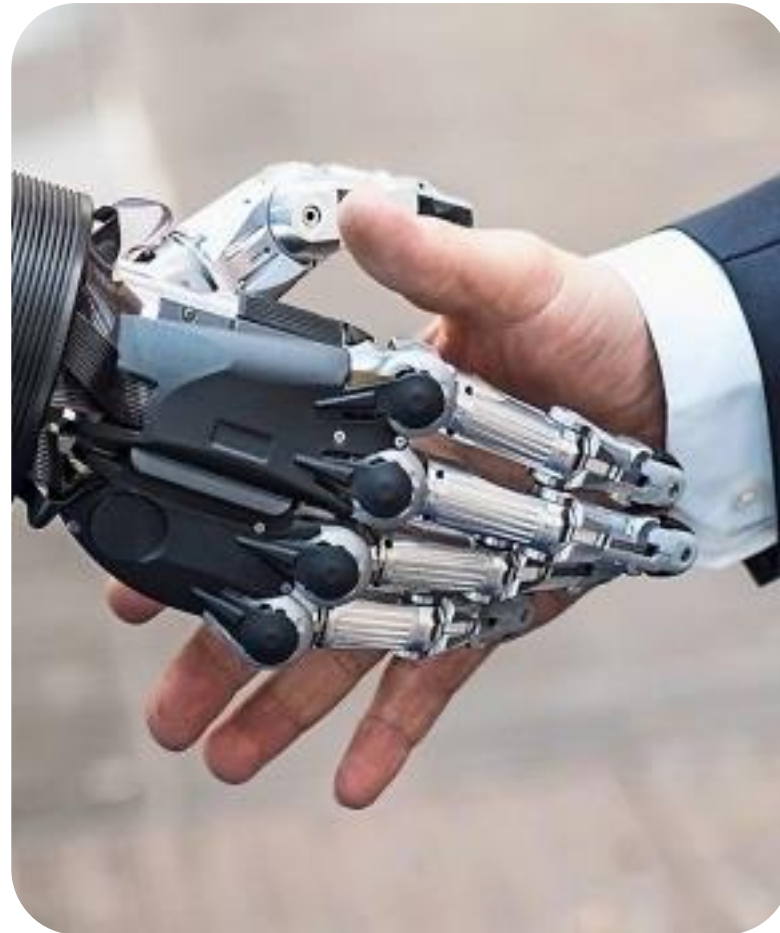
# Digital working - basic approach

There are 2 types of "digital working" in companies

## Blue Work

Formal part of work performed by humans and supported by various digital technologies (workflow, automation, AI, etc.).

- › Formal, fixed
- › Repetitions
- › Rules and structured data
- › Standards, processes
- › How does it work?
- › Routine and efficiency
- › Goals



## Red Work

Very dynamic, agile, lively part of the work that can only be done by people and through collaboration.

- › Dynamic
- › Surprise
- › Basic principles
- › Experts
- › Who can do it?
- › Communication

# Digital working - different environment & content

Various service categories are required

Working environment



Office Worker



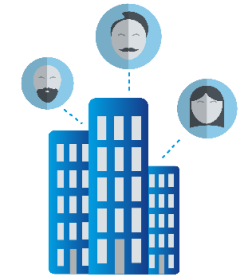
Home Office Employees



Mobile User



BYOD Worker



External employees

Service category

Blue Work

Red Work

Applications



Analysis & data



News



Content



Collaboration





# Digital working - current trends in many companies

Strongly accelerated by the Covid crisis



Everywhere



The actual location is becoming less and less important for the fulfillment of work



Office as a place of work

Anytime



The distribution of time helps people enormously in everyday life (e.g. part-time)



Fixed working hours

Multiple devices



Device use in the respective activity and location context



PC at the workplace

# SAP Build Work Zone

The new, central entry point for applications & more with SAP!

SAP Build Work Zone enables companies to easily set up **digital workplaces** to increase user productivity and engagement. It centralizes access to relevant business applications, processes, information and communication in a single entry point that can be accessed from any device.

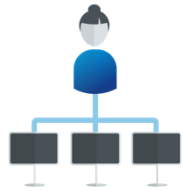
The screenshot displays the SAP Build Work Zone interface. At the top, there is a navigation bar with the 'your Logo' and search bar. Below this, the 'Meine Anwendungen' section features five tiles: 'Nachrichten Übersicht' (15), 'Wareneingänge' (7), 'Systemmeldungen' (6), 'Stellenanzeigen' (7), and 'Redaktionscockpit' (68). The 'Meine Nachrichten' section shows four news items: 'Entscheidung gefallen: SAP Success Factors wird das neue HR System', 'Bestellungen: Filterung nach Mitarbeiter ID', 'VPN-Verbindung unterbrochen', and 'Jobrad - Ein voller Erfolg'. The 'Meine Cards' section includes a bar chart for 'Projektzusammenfassung - Allgemeine Kosten', a donut chart for 'Gesamtbestellwert nach Produktkategorie', and an 'Onboarding' checklist. At the bottom, there is a 'Watchlist Projektbesetzung' table and an 'Invoice Genehmigung' card.

Projekt	Kunde	Stellenbesetzung	Status	Stellenbesetzung
5000010050	Robert Brown Entertainment	29	In Bearbeitung	33%
5000010051	Entertainment Argentina	30   230	Abgesagt	0%
5000010052	Brazil Technologies	12   69	Verspätet	33%

2 editions:  
Standard &  
Advanced

# SAP Build Work Zone

Provide users with a consistent, intelligent working environment



**Centralized access**  
to applications, messages,  
information, documents and  
tasks



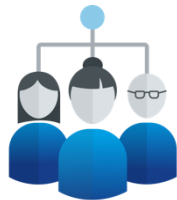
**Find**  
company-relevant  
information **quickly** using the  
search function



**Stay informed**  
with company updates and  
seamless integration of SAP  
content or third-party  
applications



**Execute tasks easily**  
with the help of standardized  
SAP Task Center workflows



**Interactive workspaces,**  
forums, feeds and knowledge  
base articles



**Flexible working**  
from anywhere, at any  
time and on any device.



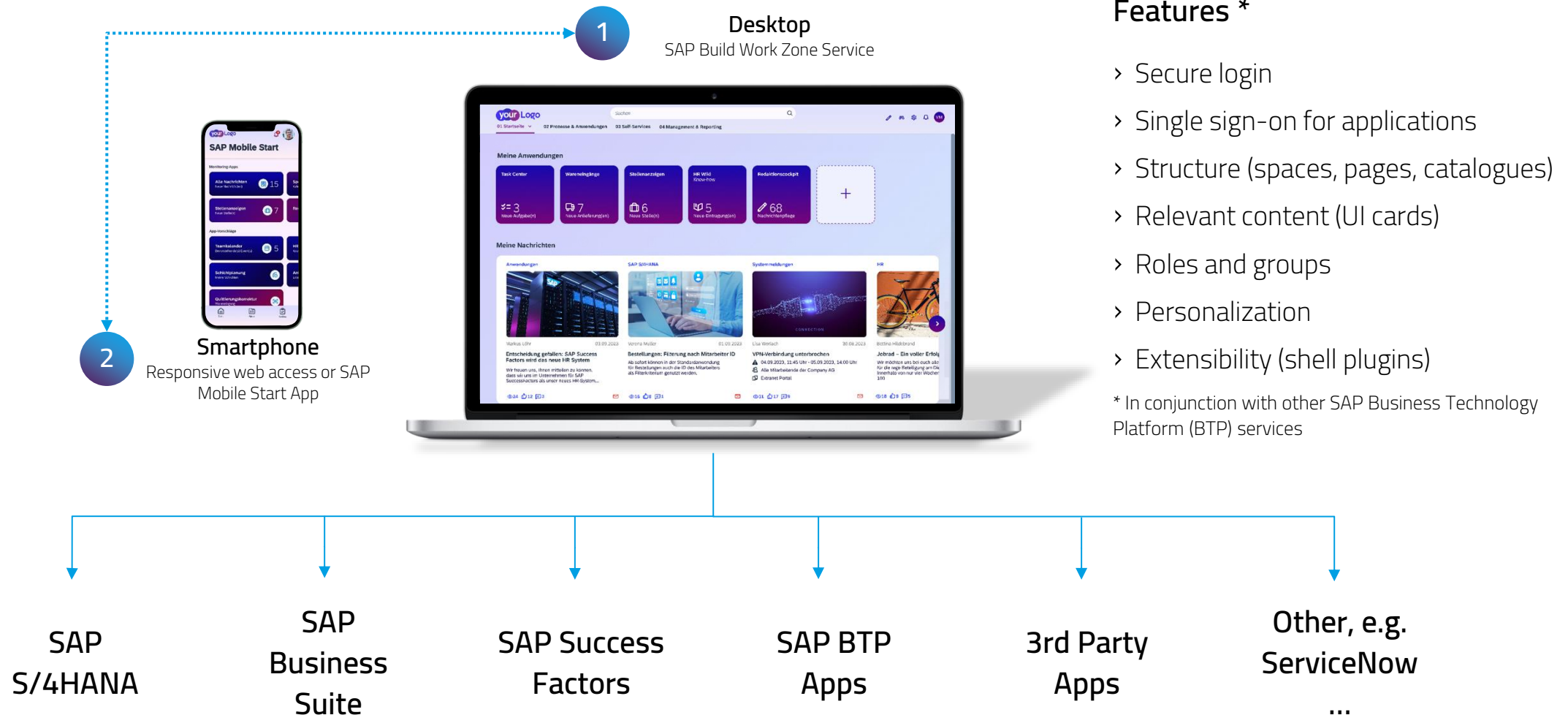
**Retrieve reports  
and notifications**  
embedded in the  
respective context



**Becoming more efficient**  
when creating and  
publishing content

# SAP Build Work Zone

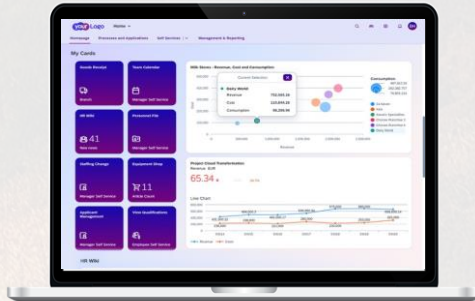
Access via desktop & smartphone to SAP & non-SAP



# Two editions available: Standard & Advanced

## Which variant of the SAP Build Work Zone is right for you?

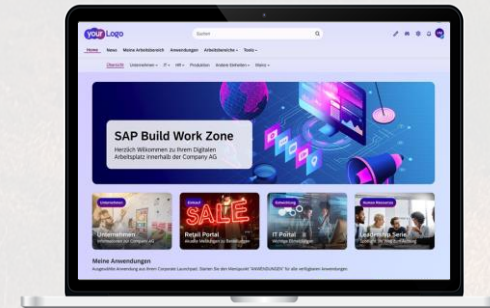
### Standard Edition SAP Build Work Zone



- › Adjustments by **administrators**
- › 2-level navigation: **areas & pages**
- › Individual design + custom integration cards + expansion options
- › **No web content management system**



### Advanced Edition SAP Build Work Zone



- › Customization by **editors** including **web content functionality**
- › More complex, **deeper navigation structures**
- › Individual design + custom integration cards + expansion options
- › **Work areas** for collaborative project work
- › Prefabricated **content packages**



STANDARD  
EDITION

## SAP Build Work Zone „Standard Edition“

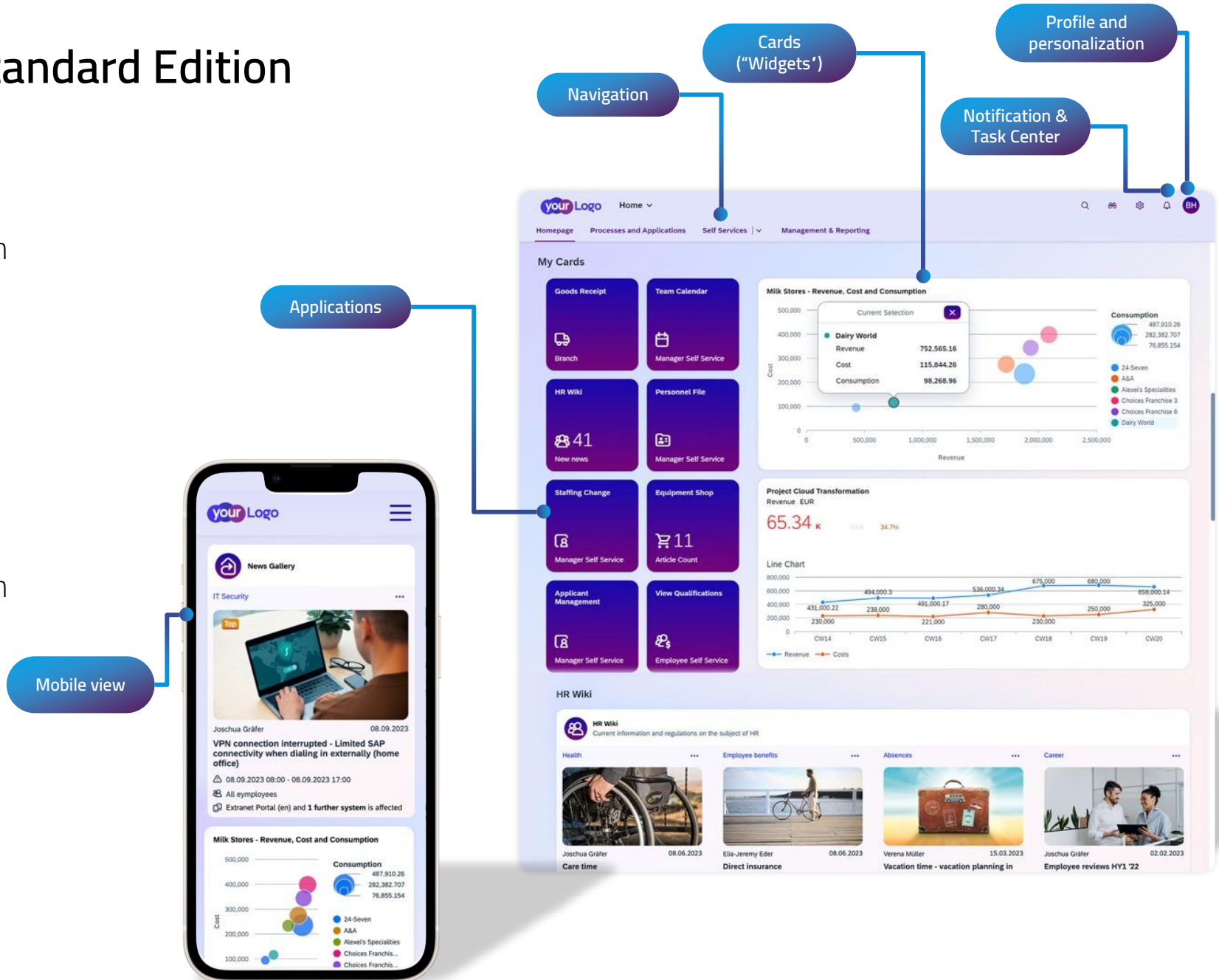
How the SAP Build Work Zone ensures  
greater productivity in everyday working life

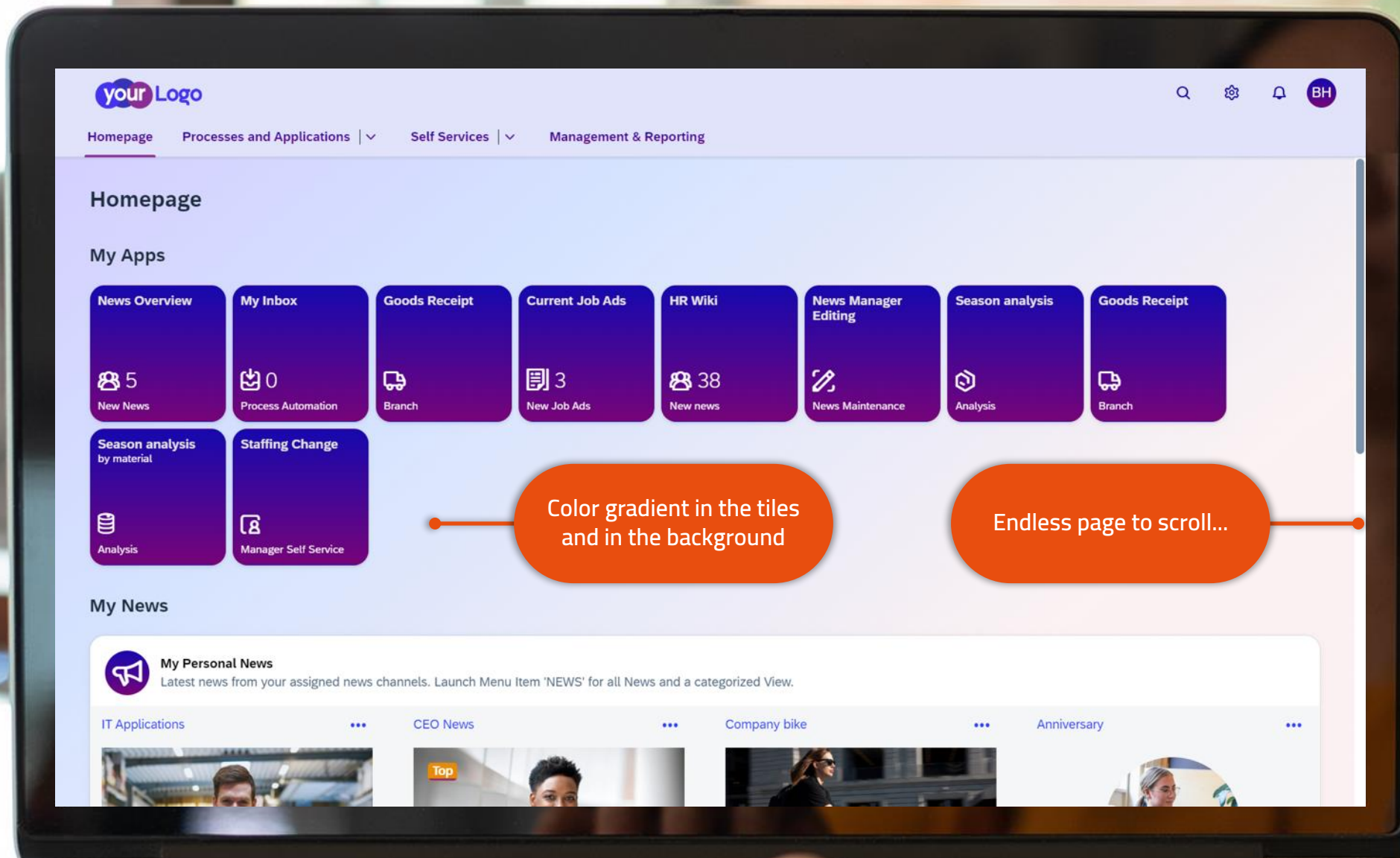
# SAP Build Work Zone – Standard Edition Overview

SAP Build Work Zone - Standard Edition enables companies to easily set up digital workstations, especially with a focus on applications.

This allows users to increase their productivity and save valuable working time using the device of their choice.

SAP Build Work Zone - Standard Edition centralizes access to relevant business applications and processes in a single entry point.

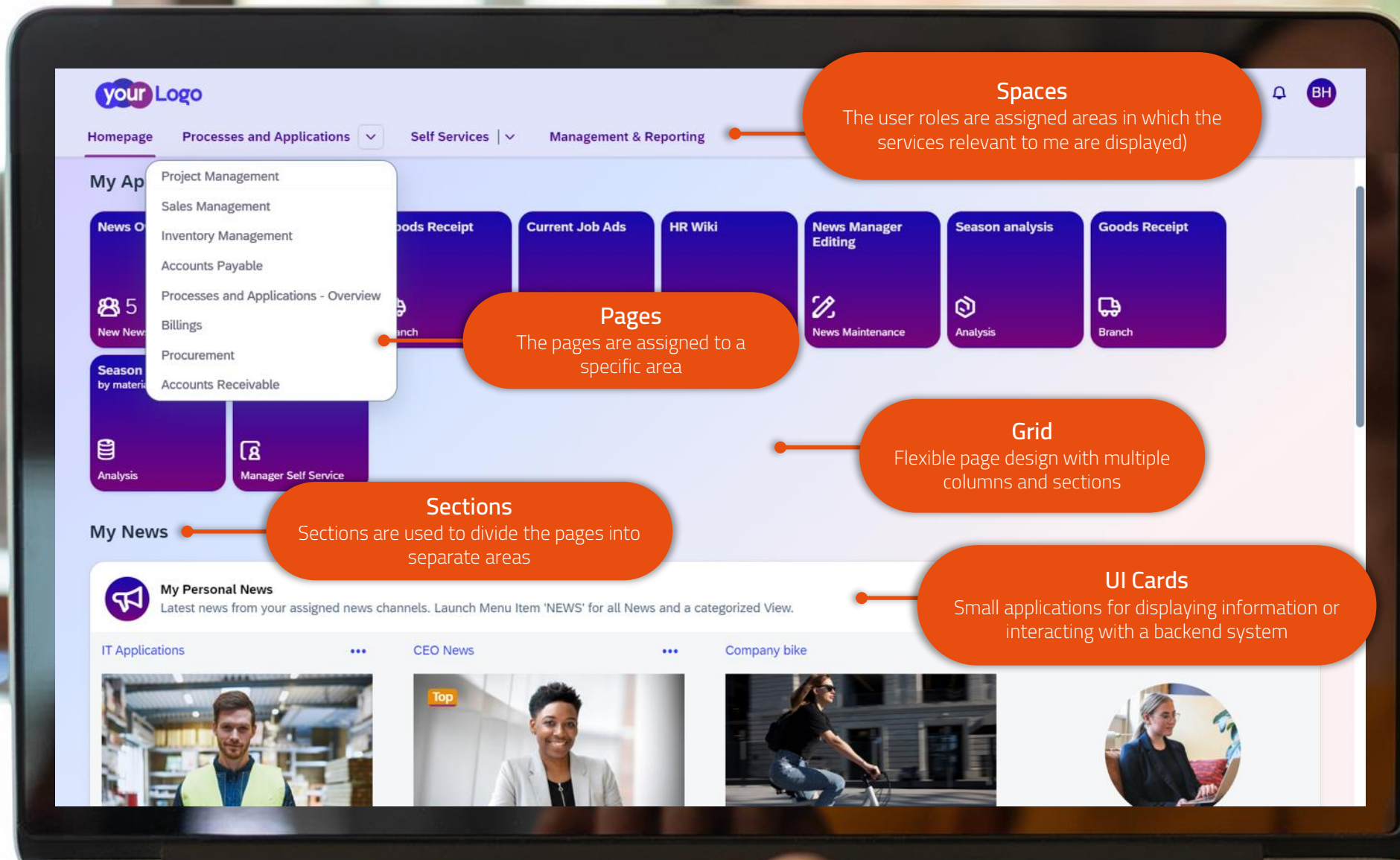




## Home page

- › Logo and color scheme customizable via theme editor or CSS
- › Recommended after SAP updates:  
**Quick UI Check**
- › Automatically also used for the **mobile view**
- › Pages can be of any **length** and can be equipped with several UI Integration Cards





### Spaces

The user roles are assigned areas in which the services relevant to me are displayed)

### Pages

The pages are assigned to a specific area

### Sections

Sections are used to divide the pages into separate areas

### Grid

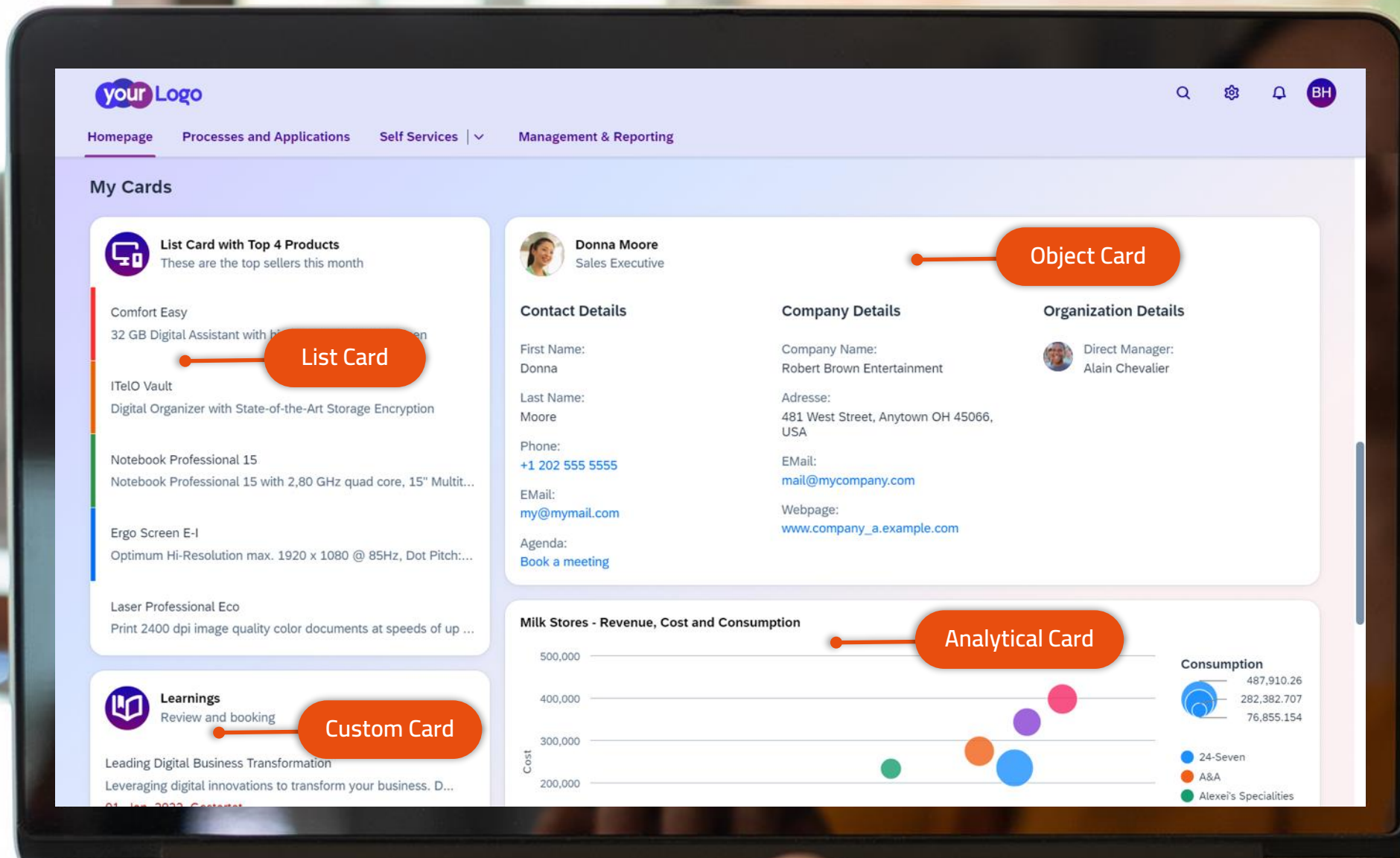
Flexible page design with multiple columns and sections

### UI Cards

Small applications for displaying information or interacting with a backend system

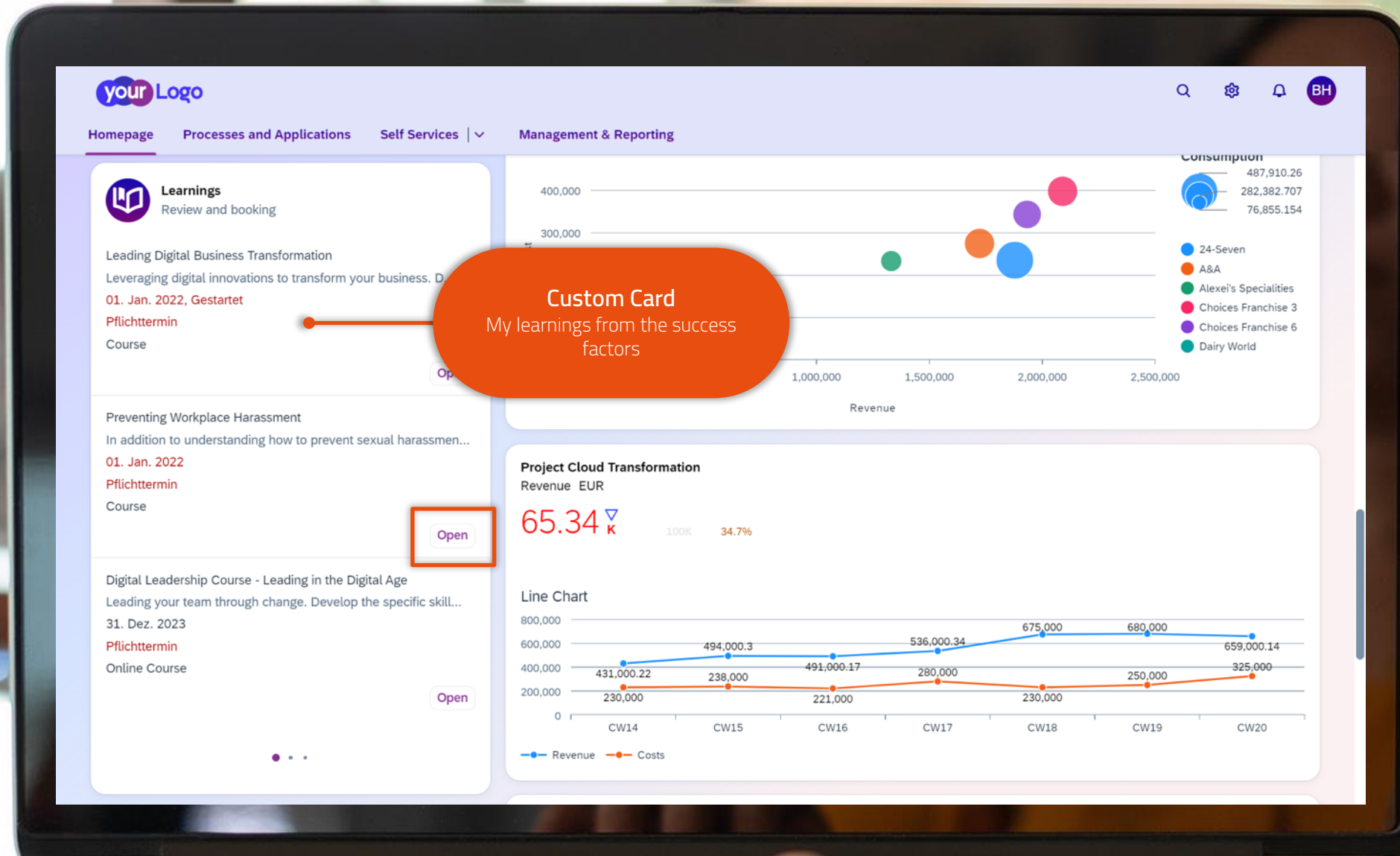
## Structure

- > The **number** of spaces and pages is not limited (max. 7 spaces per user are recommended)
- > The **grid** is very **flexible!**
- > **Personalization** takes place at Space level



## UI Cards

- › There are different types of UI integration cards.
- › Cards can be controlled via roles depending on authorization.
- › The card can behave differently depending on the user (programming required).



## Custom Cards

- › Companies can develop their **own cards**.
- › The example shows a user's **open training courses** that are directly linked to SAP Success Factors.
- › Click on "Open" to **start the training** in a new browser window (see next slide).

VANTAiO News Manager:  
Add-on for the start page


## News

- > Easy integration of add-ons
- > Here is an example of the VANTAiO News Manager Card for the provision of relevant information on the start page

### My Personal News

Latest news from your assigned news channels. Launch Menu Item 'NEWS' for all News and a categorized View.

#### IT Applications




Bettina Hildebrandt 11.08.2023

**Introducing the New Service: Plant Gate Monitoring**

We are excited to announce the introduction of a valuable new application service aimed at improving transparency in our delivery...

4 2 1

#### CEO News




Joschua Gräfer 23.06.2023

**New member of the US Board of Management: Karen Timothy**

We are very pleased to welcome Karen Timothy to the U.S. Board of Directors as of June 1, 2023! In the following message we introduce...

18 3 1

#### Company bike




Bettina Hildebrandt 29.03.2023

**Bicycle market in change - Why a company bike can also be of interest for you**

More and more cyclists are turning to e-bikes. The latest models not only offer high performance, but also a long battery life and ...

6 2 0

#### Anniversary



Lisa Schmitt on 05.07.2022

Congratulations on passing the examination for office management assistant

Congratulate now

9 1 0

1 of 6 >

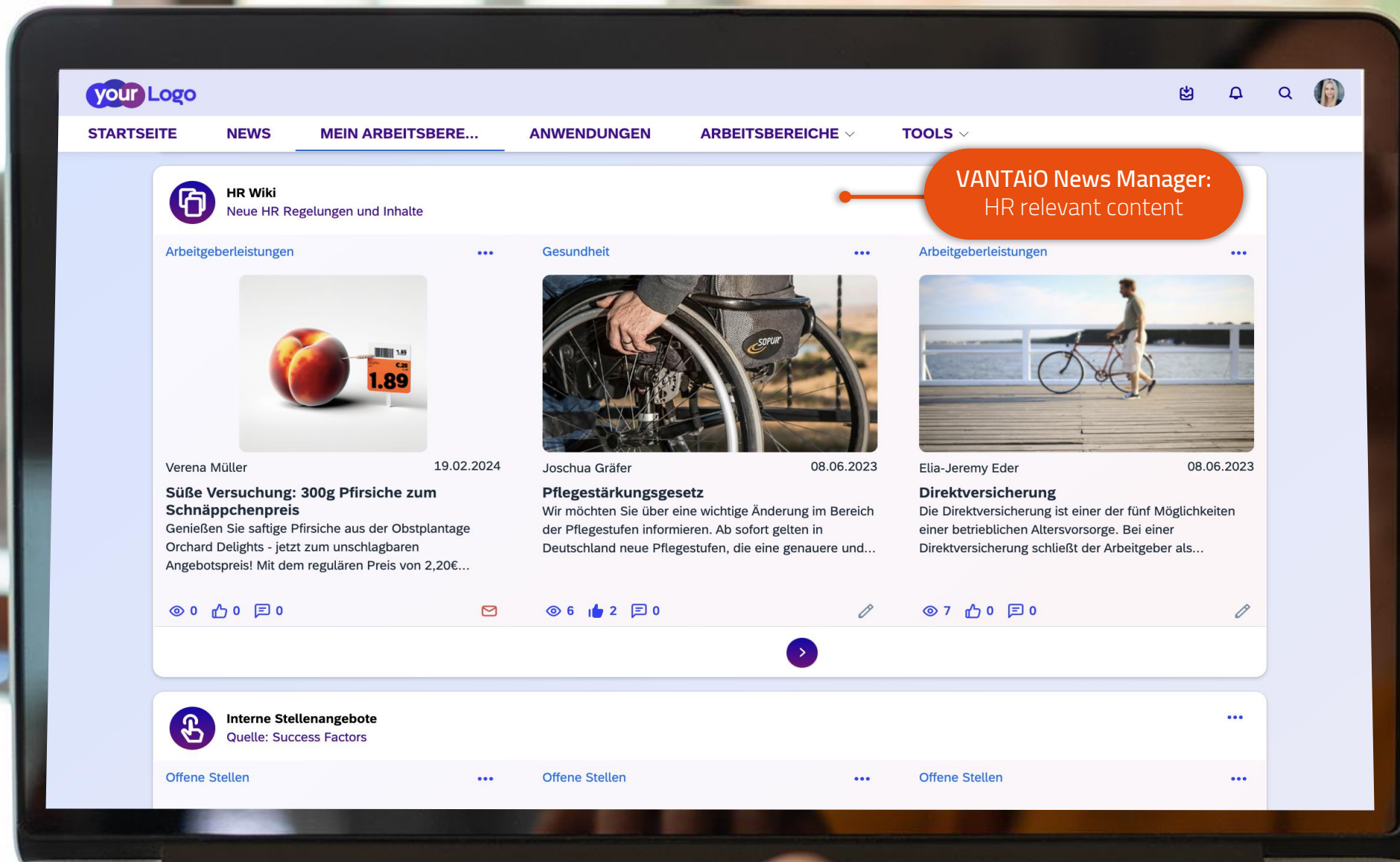
### My Cards



List Card with Top 4 Products  
These are the top sellers this month



Donna Moore  
Sales Executive



## Content

- › The content of the **VANTAiO News Manager** is flexibly customizable.
- › For example, for the provision of **HR-relevant information** on a department page (HR wiki, internal job vacancies).
- › Completely **different information objects** can also be implemented (reports, production, logistics, ...)

### Accounts Payable

**Parked Invoices** 3 of 64

Average Days

**77.0**  
As of Today

By Entry Date

0017100088 (Domestic... 1710 (Velotics Inc.) 5100003358	05/24/2023 2.0 USD
0017300001 (Domestic... 1710 (Velotics Inc.) 5100003359	05/25/2023 -525.0 USD
0017100088 (Domestic... 1710 (Velotics Inc.) 1800000000	06/07/2023 -1.0K USD

**Blocked Invoices - Chart View**

Total | USD

**167.82** κ  
As of Today

By Block Reason

Amount in DC by Item Payment... | USD

Block Reason	Amount in DC (USD)
* (Skip acco...	~60K
A (Blocked for pay...	~75K
B (Manual paym bl...	~18K
R (Invoice verificati...	~2K
V (Payment clearing)	~12K

**Blocked Invoices** 3 of 27

Total | USD

**167.82** κ  
As of Today

By Aging

0017100088 (Do... 1710 (Velotics Inc.) 1900000007	127 days overdue R 2.00K USD
0017300001 (Do... 1710 (Velotics Inc.) 5100003364	96 days overdue A 128.30 USD
USSU-TRL10 (Hu... 1710 (Velotics Inc.) 5100003365	68 days overdue A 22.76 USD

**Cash Discount Utilization**

Taken - Last 6 Months | USD

**27.07** κ  
This Period

Target 608K Deviation -96%

Discount Type Stacked

Cash Payment Discount by Mo... | USD

Month	Taken Cash Discounts (USD)	Lost Cash Discounts (USD)
04/2023	~600K	~300K
05/2023	~550K	~350K
06/2023	~350K	~400K
07/2023	~800K	~300K
08/2023	~600K	~200K
09/2023	~10K	~50K

**Days Payable Outstanding Indirect**

DPO Average - Last 12 Months

**Days Payable Outstanding**

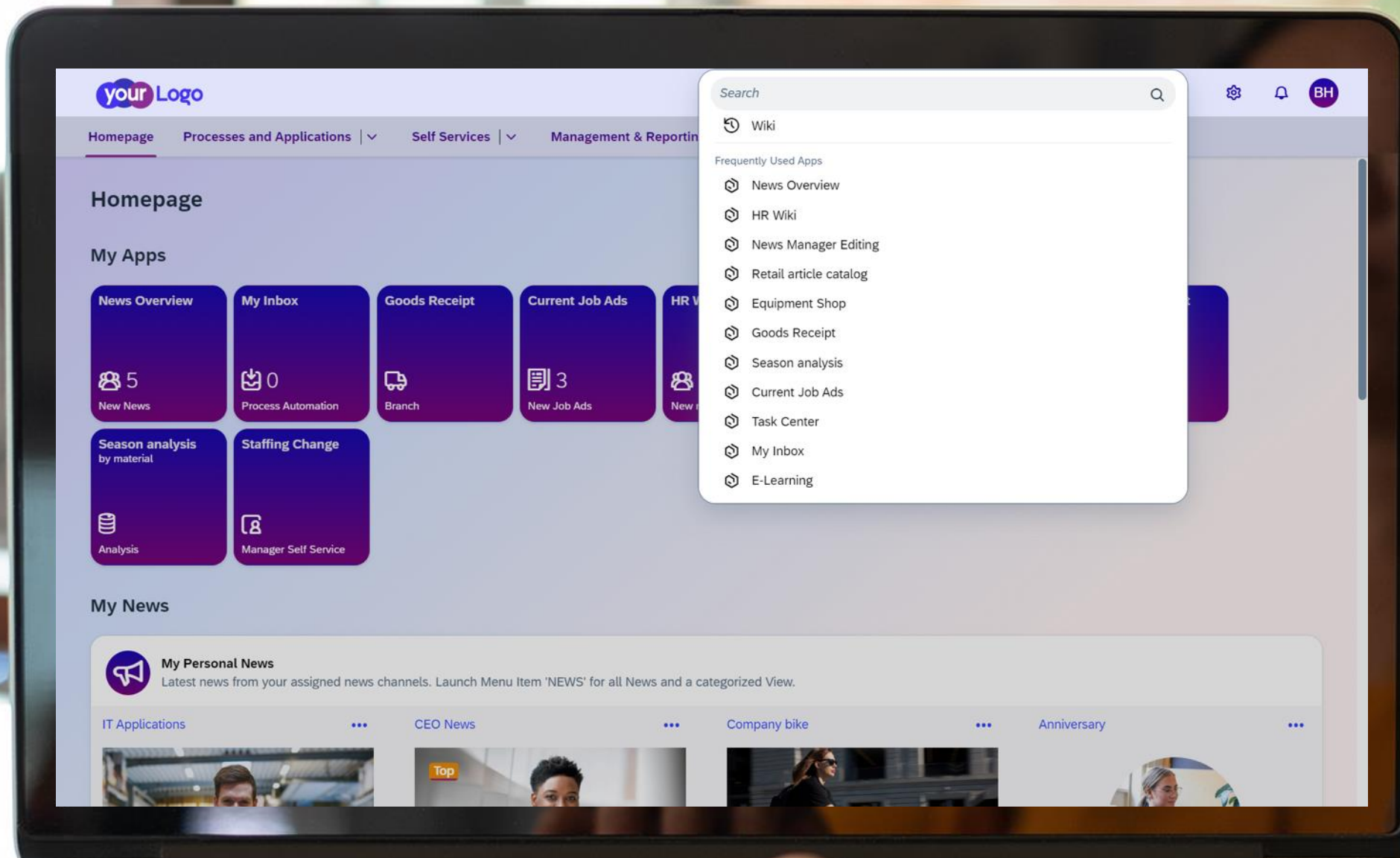
**Quick Links**

Manage Supplier Line Items

**Suppliers with Debit Balances**

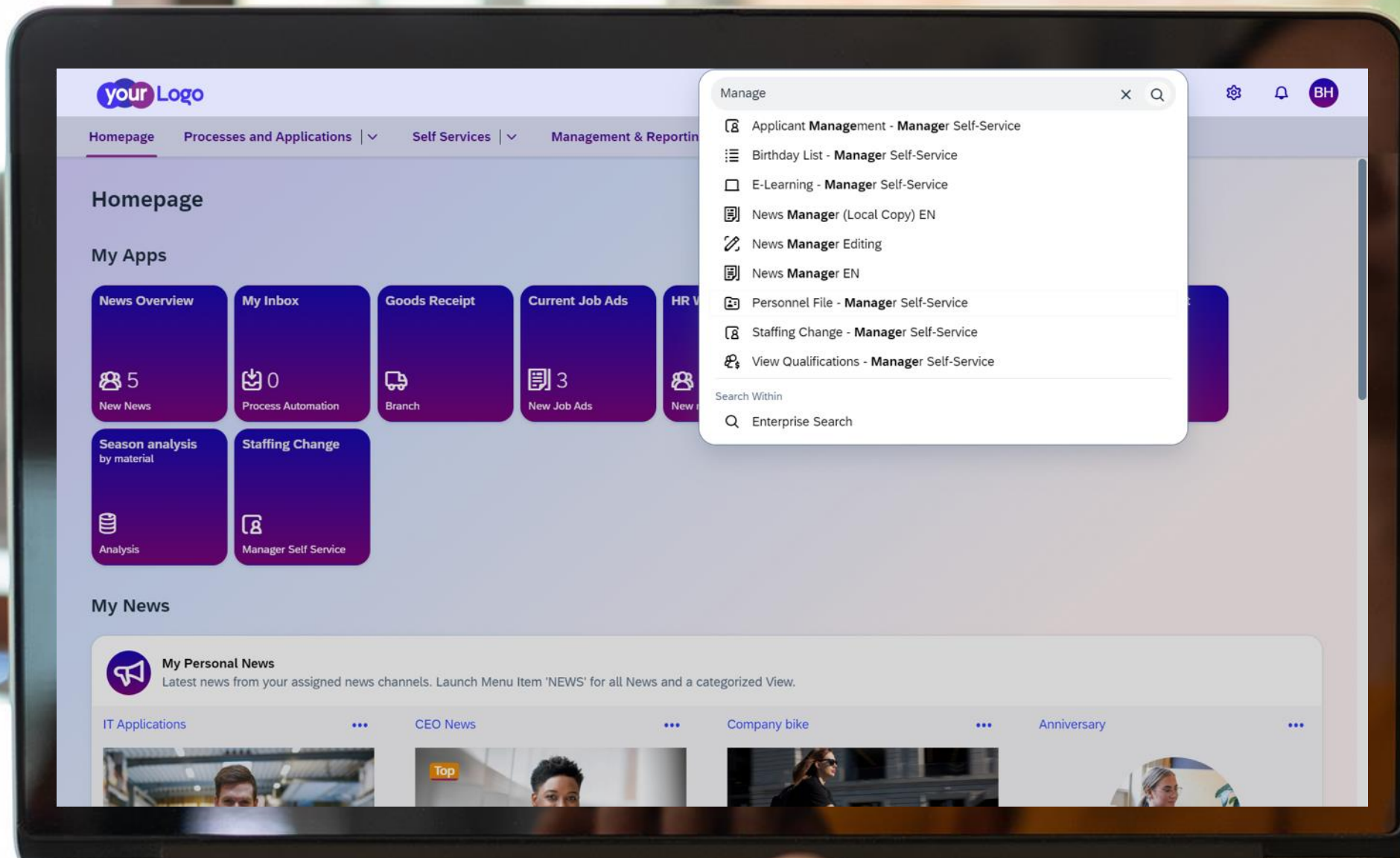
## Content Packages

- › SAP Work Zone Standard offers the option of integrating **UI card collections** or applications.
- › This integration can be done manually or by **automatically transferring** the roles from an SAP system.



## Central search

- > The search field has a **combined function**.
- > The **most frequently used applications** are displayed based on the user's usage behavior.



## Central search

- > Users can **search** for applications.
- > This is particularly helpful if the "role" or "authorization" allows access to a **large number** of applications.





## SAP Build Work Zone „Advanced Edition“

How the SAP Build Work Zone  
ensures more productivity in  
everyday work

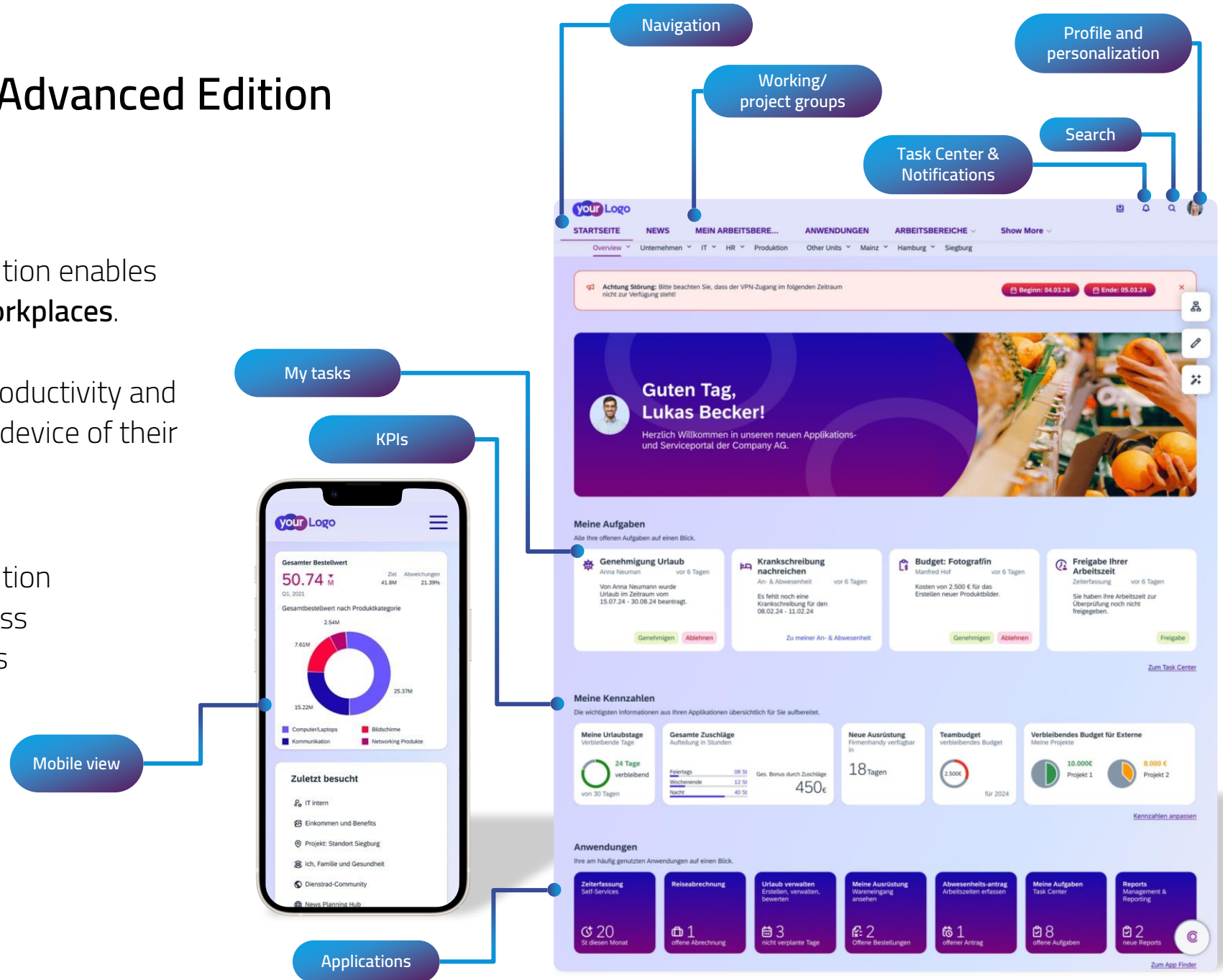
**ADVANCED  
EDITION**

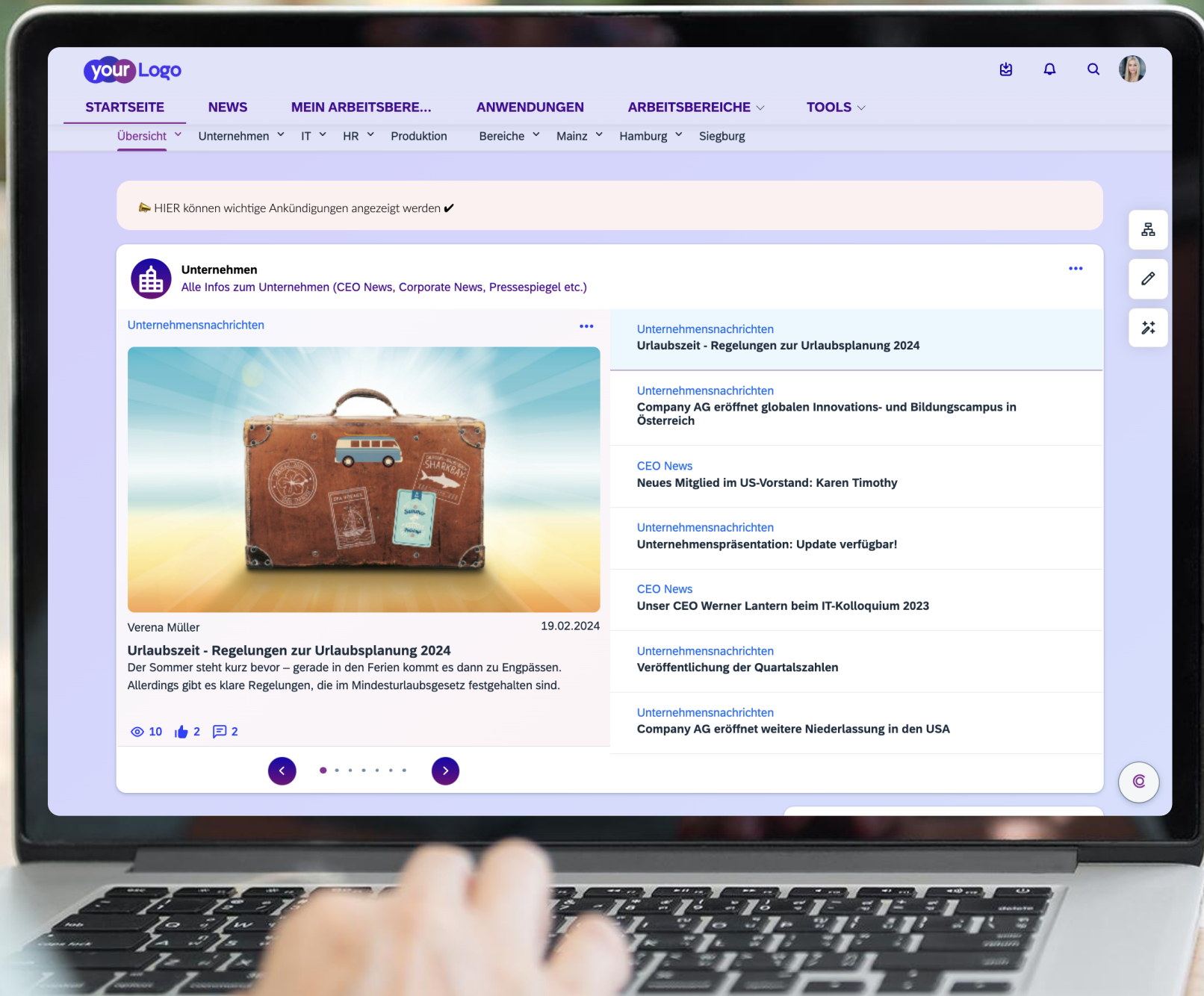
# SAP Build Work Zone – Advanced Edition Overview

SAP Build Work Zone - Advanced Edition enables companies to easily set up **digital workplaces**.

This allows users to increase their productivity and save valuable working time with the device of their choice.

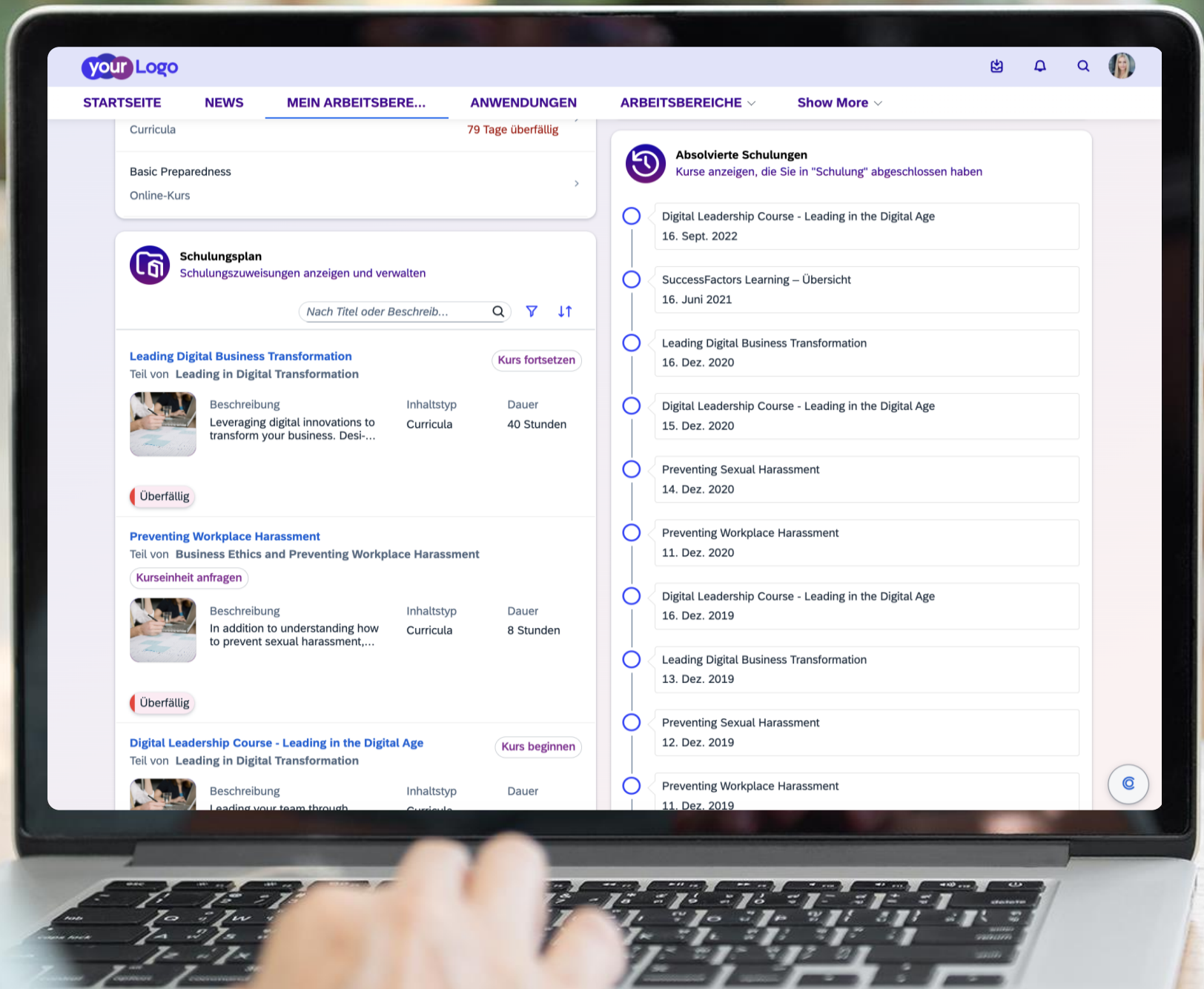
SAP Build Work Zone - Advanced Edition centralizes access to relevant business applications and processes as well as **content and communication** in a single entry point.





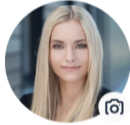
## Home page

- > **Menu structure** is more extensive than in the standard version
- > **Inplace editing** is easily possible for authorized users at the touch of a button
- > **Logo and color scheme** customizable via theme editor or CSS, just like in the standard version
- > **Profile function** is significantly more extensive than in the standard version



## Content Packages

- › Various content packages with extensive "out-of-the-box" functionalities are available for the **Advanced Edition**
- › Here you can see an example from the **content package for SuccessFactors**: Process support for **onboarding new employees** by providing learning units and checklists



**Bettina Hildebrandt**  
Administrative Support

0 Follower | 3 Folge ich!

Übersicht

Erfolge

Soziales Diagramm

Arbeitsbereiche

Blogbeiträge

Dokumente

Bilder

Umfragen

Videos

Wiki-Seiten

**Bettina Hildebrandt** Administrative Support 📧

Standort:  
Heimbüro Standort Siegburg

Büro:  
(1) 678 555-3223

E-Mail:  
sfadmin@bestrunsap.com

### Abwesenheitsbenachrichtigungen

Abwesenheitsbenachrichtigungen

### Stelleninformationen

Stellenbezeichnung: Administrative Support  
Stellenbeschreibung: Support Standort Siegburg  
Startdatum: 17. März 2002  
Benutzerkennung: U4bGwZ8D8JSKnJocFITBMM

### Kontaktdaten

Arbeit: (1) 678 555-3223  
E-Mail: sfadmin@bestrunsap.com  
Benutzername: sfadmin

✎ Details bearbeiten

📄 Zusätzliche Informationen anzeigen

Teilen Sie Neuigkeiten mit allen in der Firma...

👤 📧 📷 📺 📄 Teilen

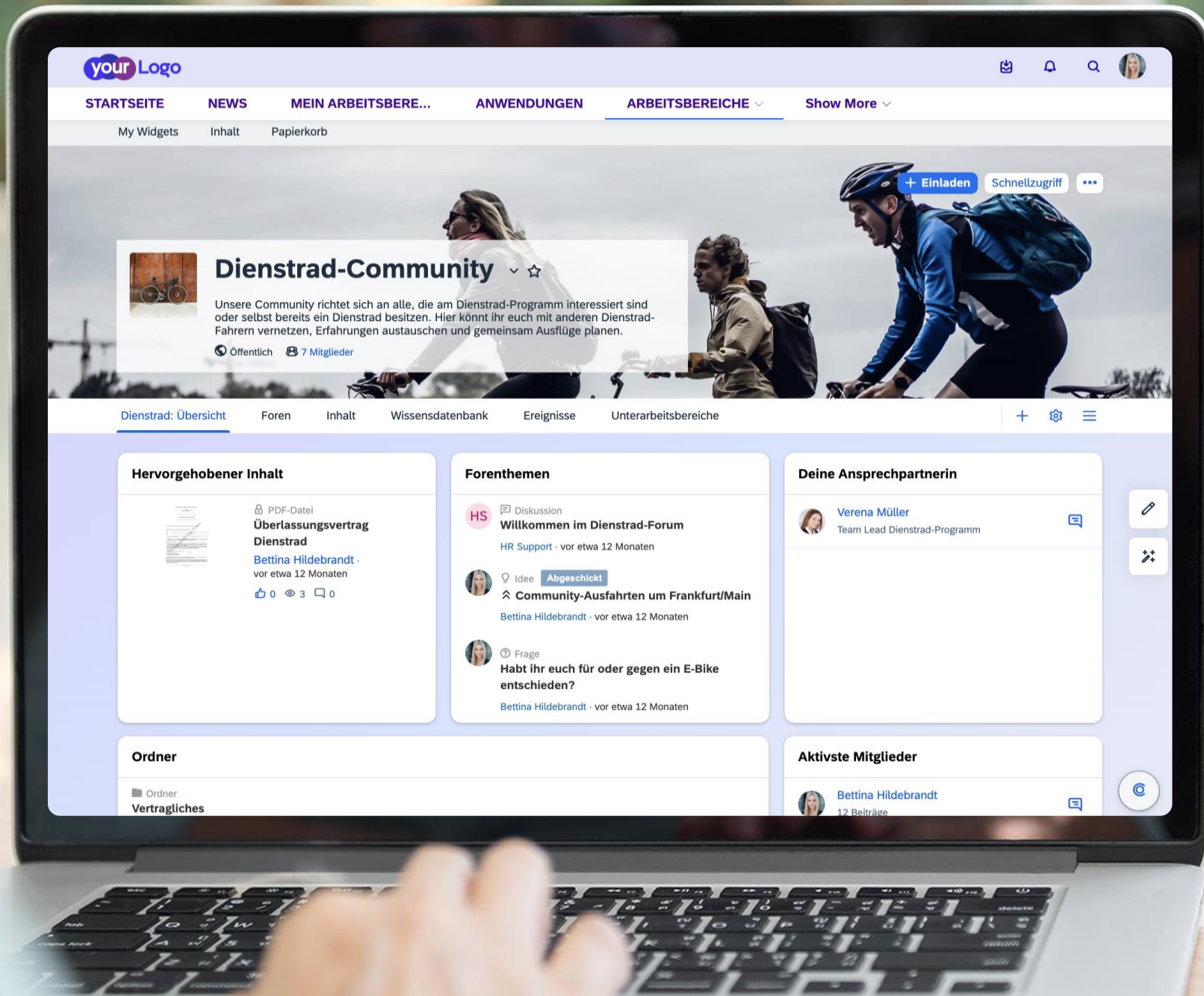


📅 **Dienstrad Inspektionstag Frühjahr 2024**  
Bettina Hildebrandt · vor etwa 11 Monaten · Dienstrad-Community



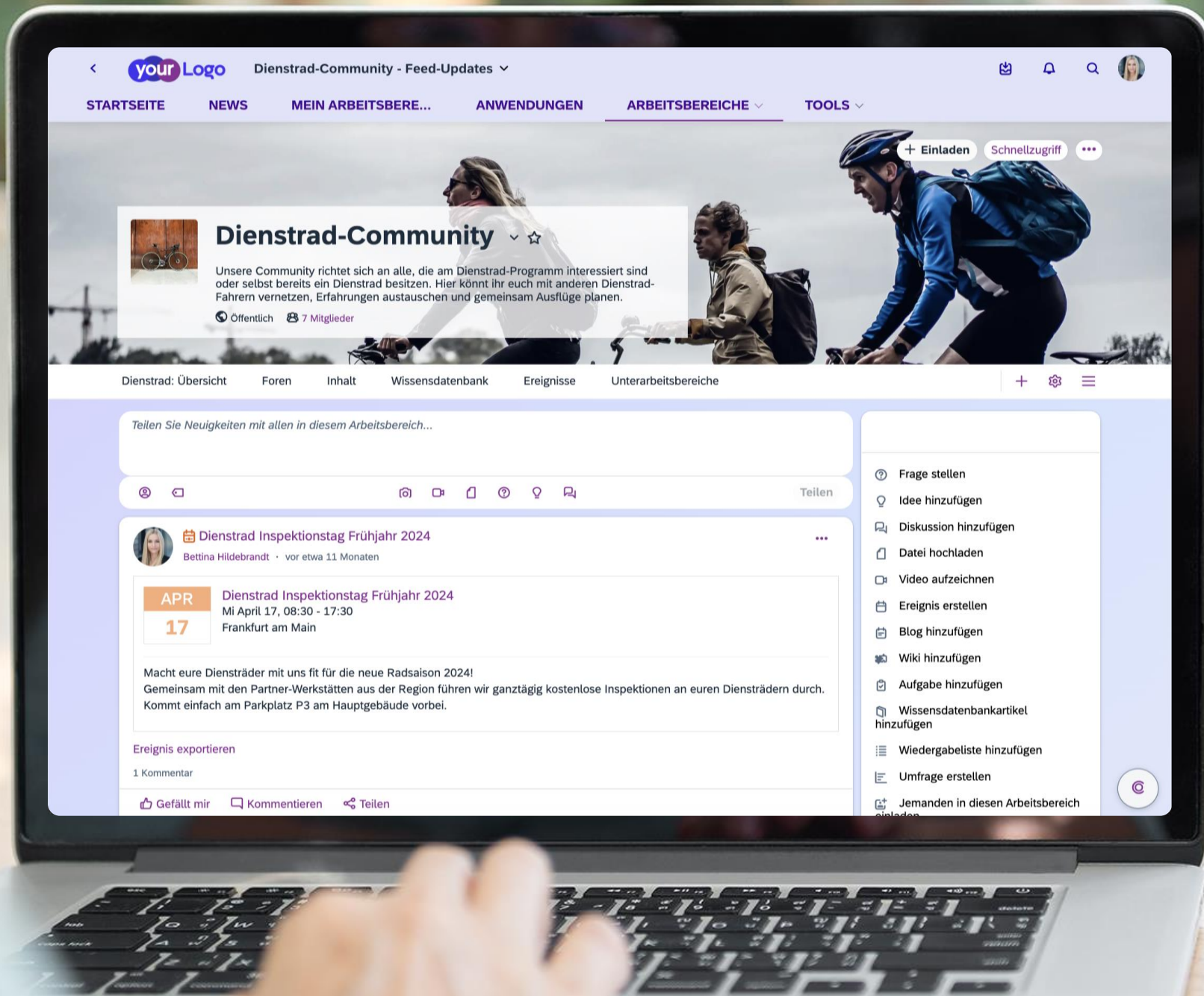
## Profile

- › Extensive display and maintenance function for the personal profile
- › The profile is automatically kept up to date based on a user's activities
- › Individual maintenance of data and updating of the profile picture is comparable with the functionality from social media



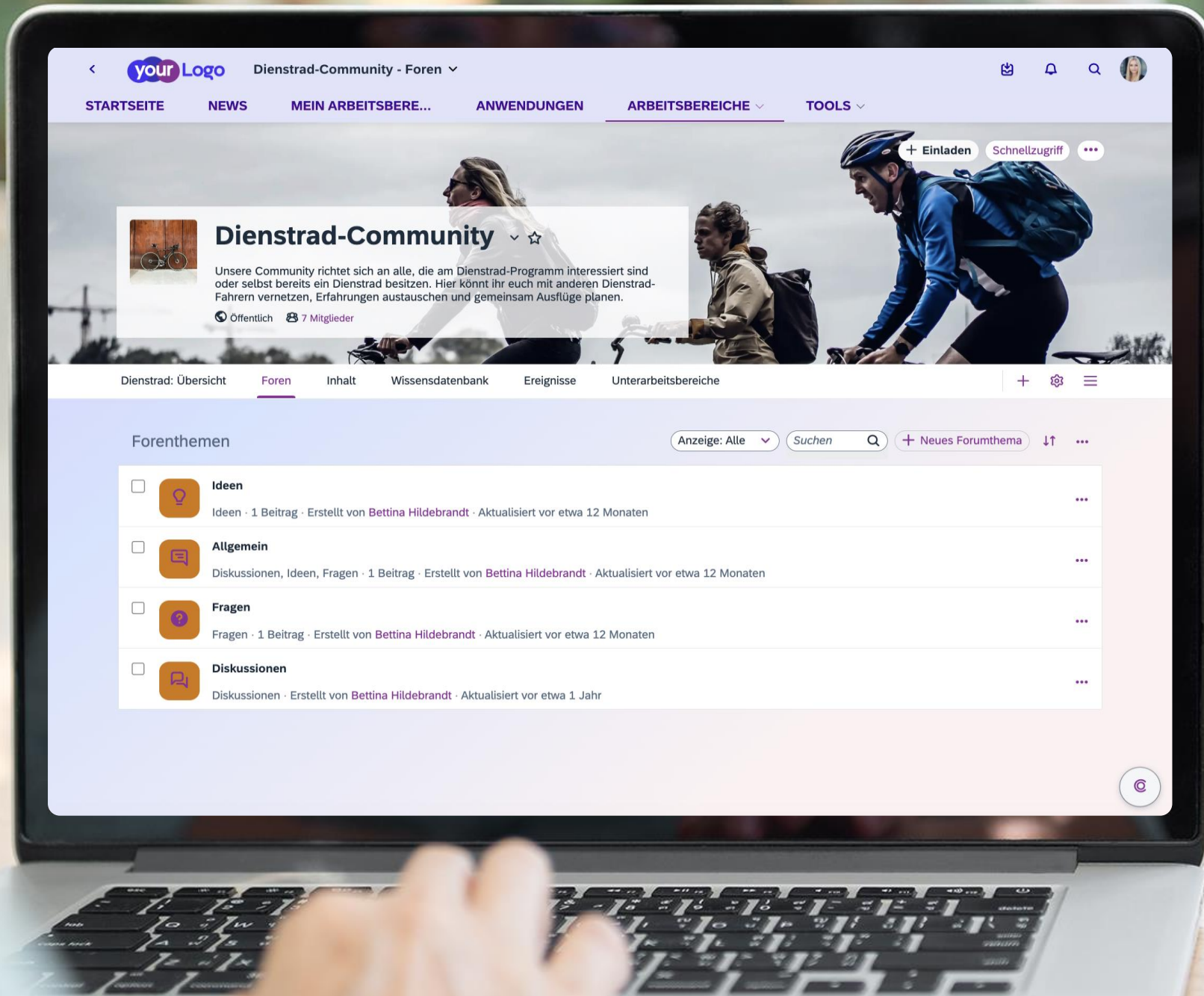
## Community – Overview

- › In the Advanced Edition, so-called **workspaces** can be created for specific topics (=teams)
- › A workspace can be structured and designed as desired, with its own menu items and content on the pages
- › Teams can be easily put together using the **invitation function**
- › The example shows a **company bike community** created by the HR department



## Community – Contributions

- › A **workspace** in the Advanced Edition is assigned to digital work from the "red area"
- › Extensive **collaborative functions** are available in the workspaces, such as postings, questions, discussions, ideas, documents, videos, surveys and much more.
- › The structure of the pages can be customized by the owner of the respective workspace



## Community – Forum topics

- › In this example workspace, **discussion forums** for the community have been provided on the second page
- › Members of the community can actively participate in discussions here or start a new forum topic
- › Additional software for discussion forums, WIKIs, exchange of ideas, etc. is no longer required, these functions are available out-of-the-box in the Advanced Edition





## Dienstrad-Community

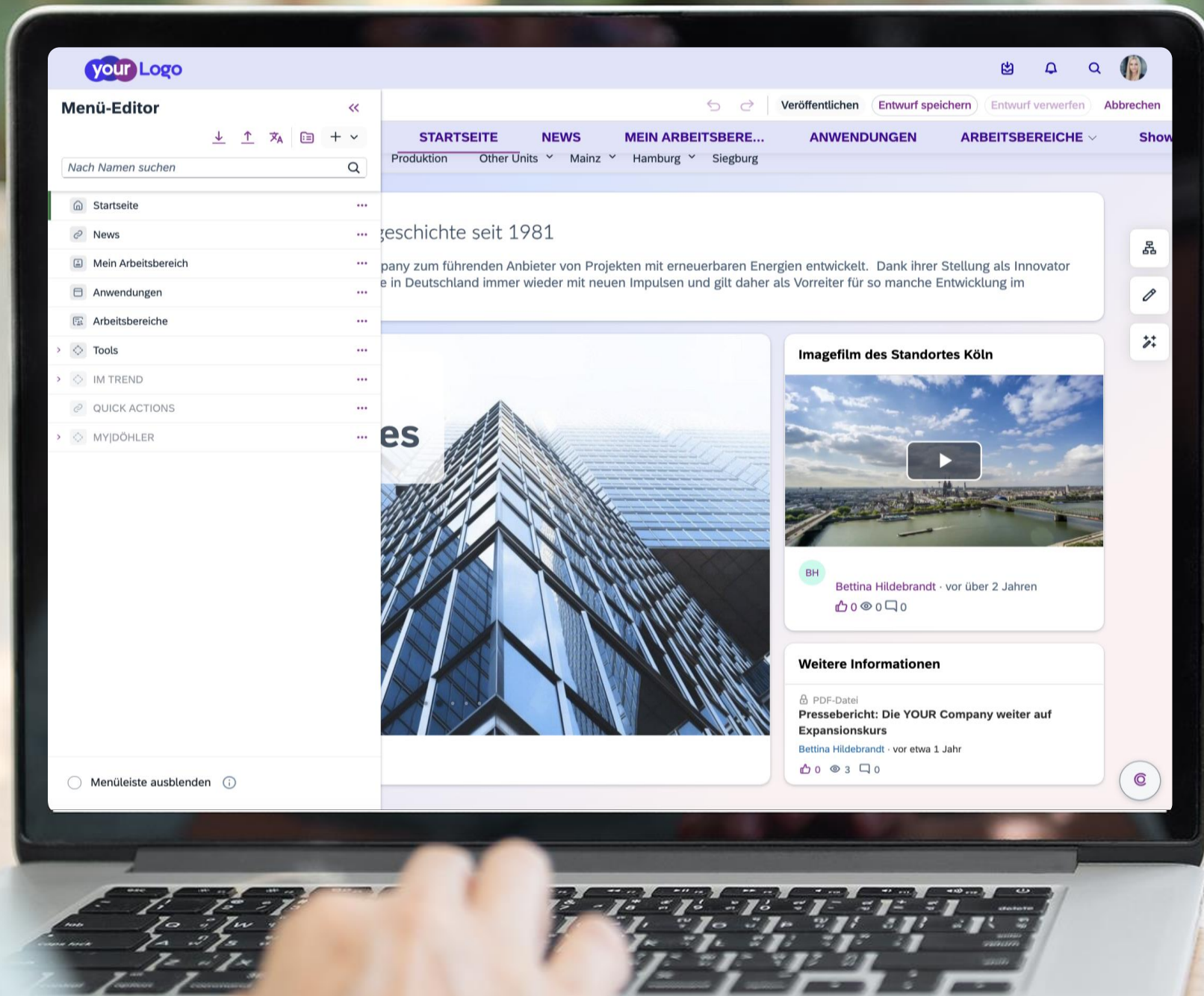
Unsere Community richtet sich an alle, die am Dienstrad-Programm interessiert sind oder selbst bereits ein Dienstrad besitzen. Hier könnt ihr euch mit anderen Dienstrad-Fahrern vernetzen, Erfahrungen austauschen und gemeinsam Ausflüge planen.

Öffentlich 7 Mitglieder

<input type="checkbox"/>	Titel	Beitragender	Zuletzt geändert	Aktion
<input type="checkbox"/>	Vertragliches	Bettina Hildebrandt	vor weniger als 1 Minute	
<input type="checkbox"/>	Händlerkatalog.pdf	Bettina Hildebrandt	vor weniger als 1 Minute	
<input type="checkbox"/>	Überlassungsvertrag Dienstrad	Bettina Hildebrandt	vor etwa 12 Monaten	
<input type="checkbox"/>	Handbuch-dienstradleasing.pdf	Bettina Hildebrandt	vor 4 Minuten	
<input type="checkbox"/>	Internes Teaserbild Dienstrad.jpg	Bettina Hildebrandt	vor etwa 7 Monaten	

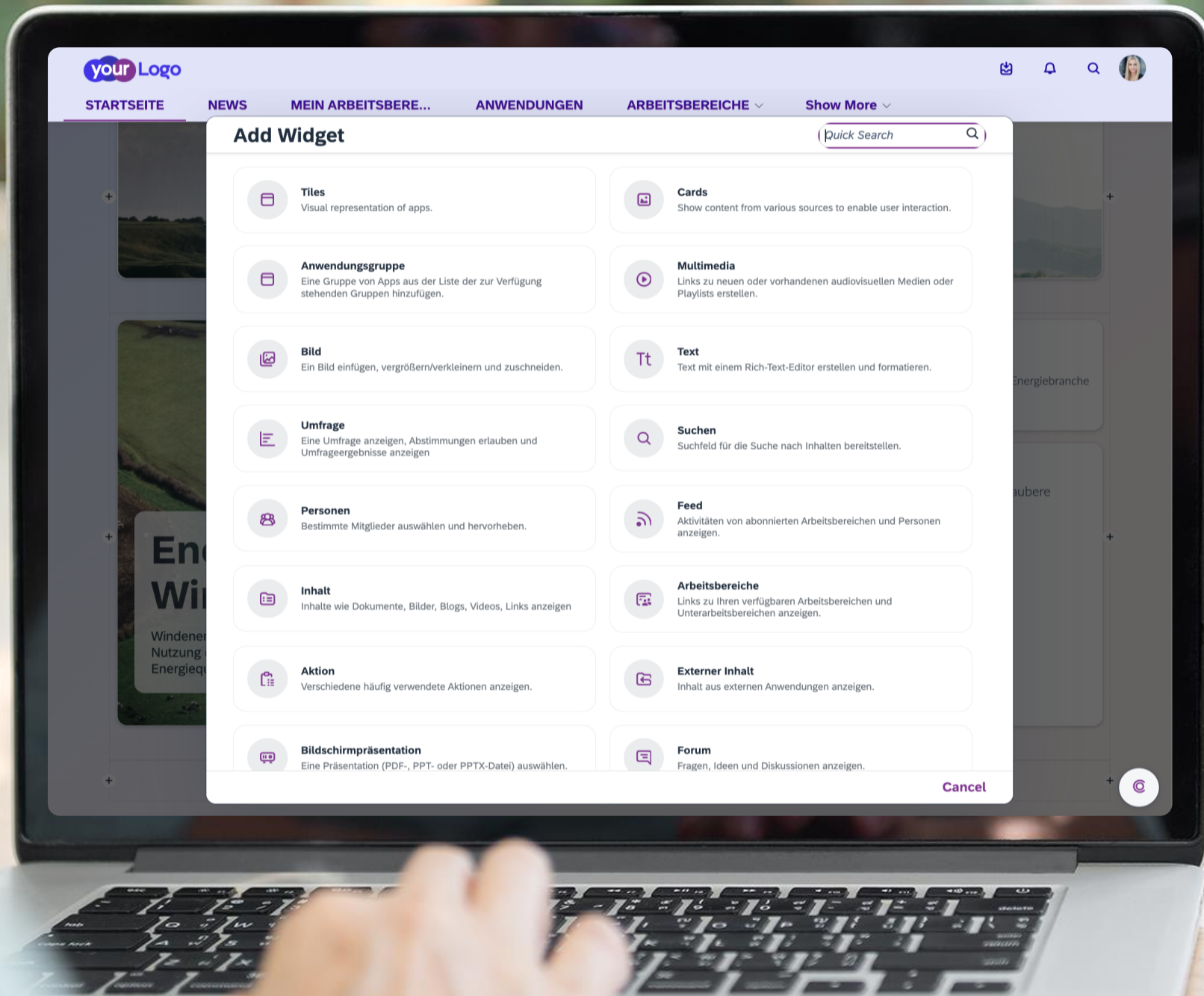
## Community – Documents

- > The Advanced Edition of the SAP Build Work Zone provides a fully integrated **document management** solution that can be used anywhere
- > This example shows how the relevant **documents** on the subject of company bicycles are provided in a folder structure.



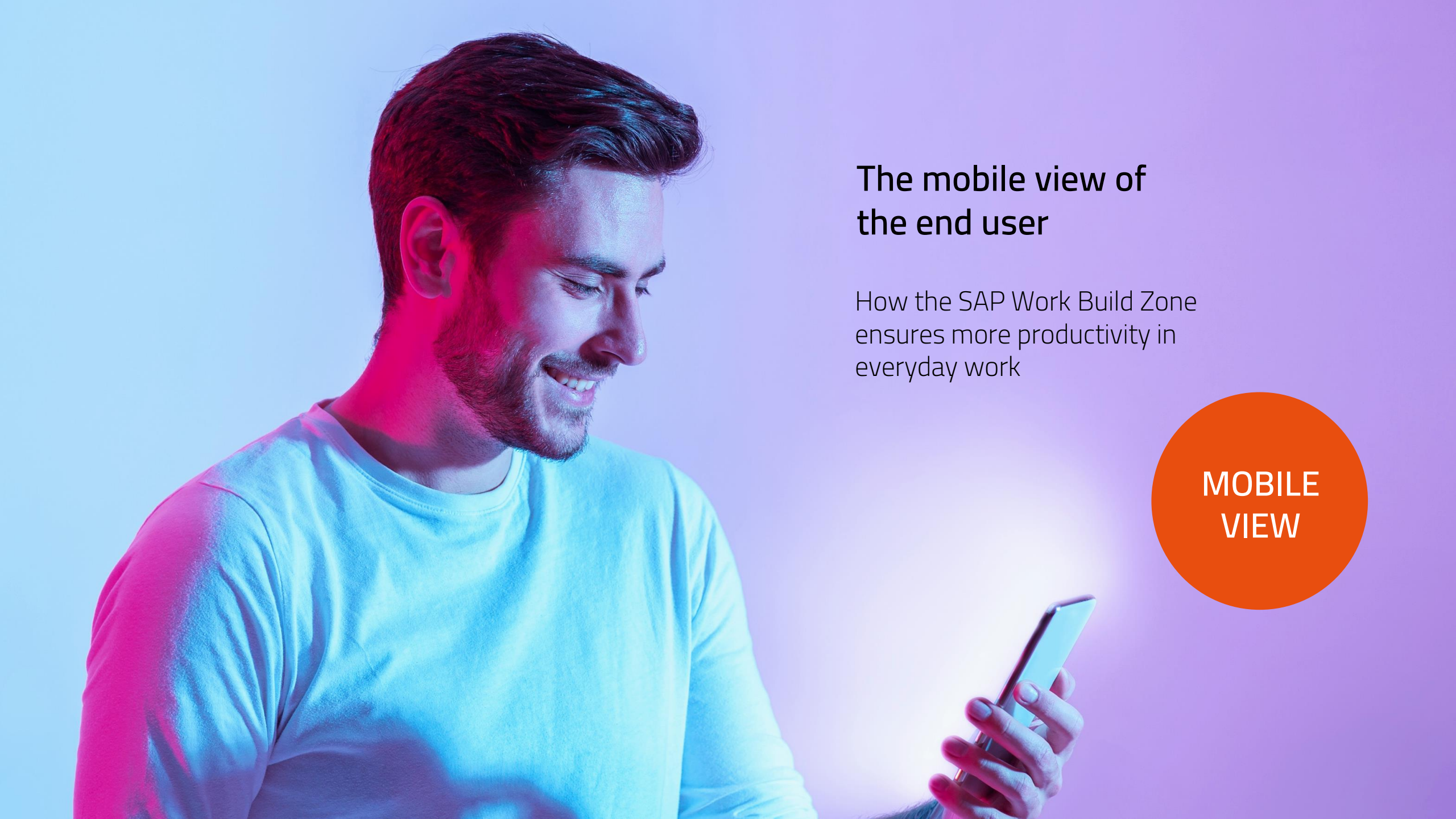
## Menu editor

- > The Advanced Edition provides editors with their own menu editor, which can be used to edit the entire **menu structure** of the "Work Zone"
- > Pages / menu items can also be temporarily hidden



## Widgets

- › In contrast to the Standard Edition, the Advanced Version of SAP Build Work Zone allows authorized **editors** to "install" widgets and cards on pages
- › The integrated version **management** system automatically saves versions of the pages, which can be reverted to if required
- › A large number of **widgets** are available, similar to web construction kit systems such as Joomla or Wordpress



## The mobile view of the end user

How the SAP Work Build Zone  
ensures more productivity in  
everyday work

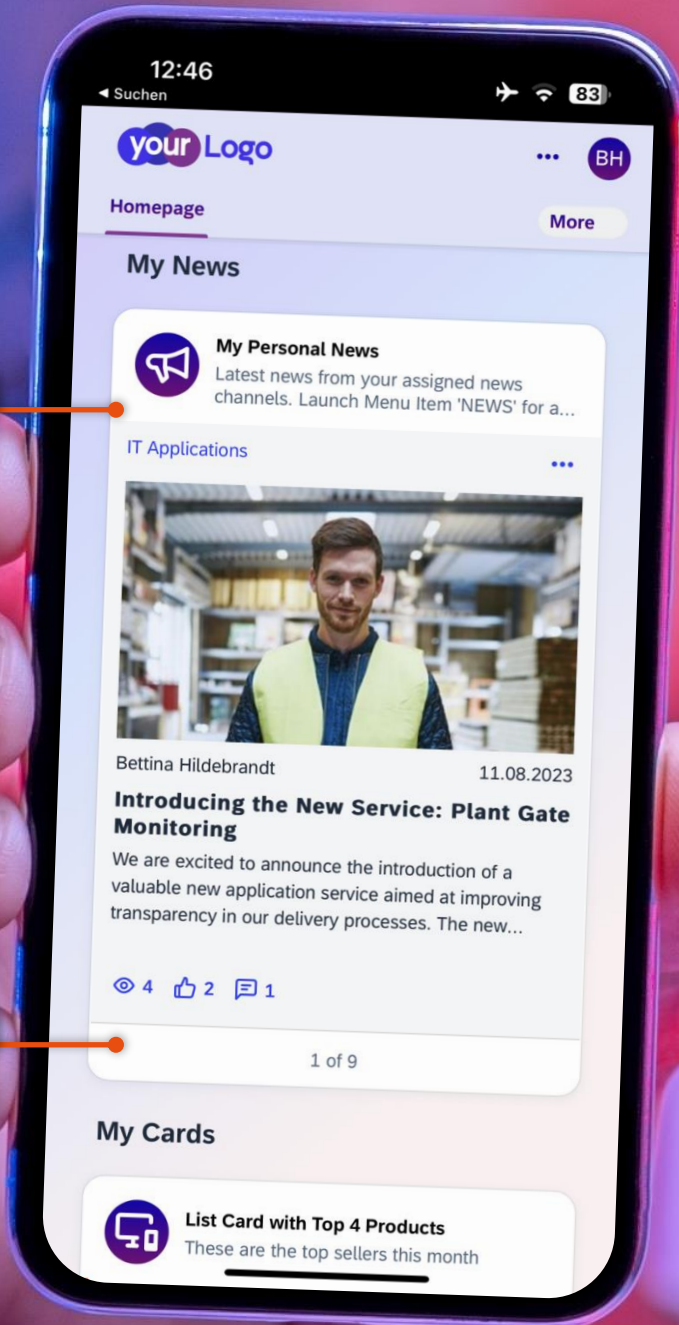
**MOBILE  
VIEW**

Blueberry Design



## Access via smartphone

- > Apps are displayed directly on the landing page
- > e.g. VANTAiO News Manager apps, custom Fiori apps or other apps, such as Success Factors Services
- > The system is "inherently" **responsive**
- > We use our new VANTAiO theme "**Blueberry**" here

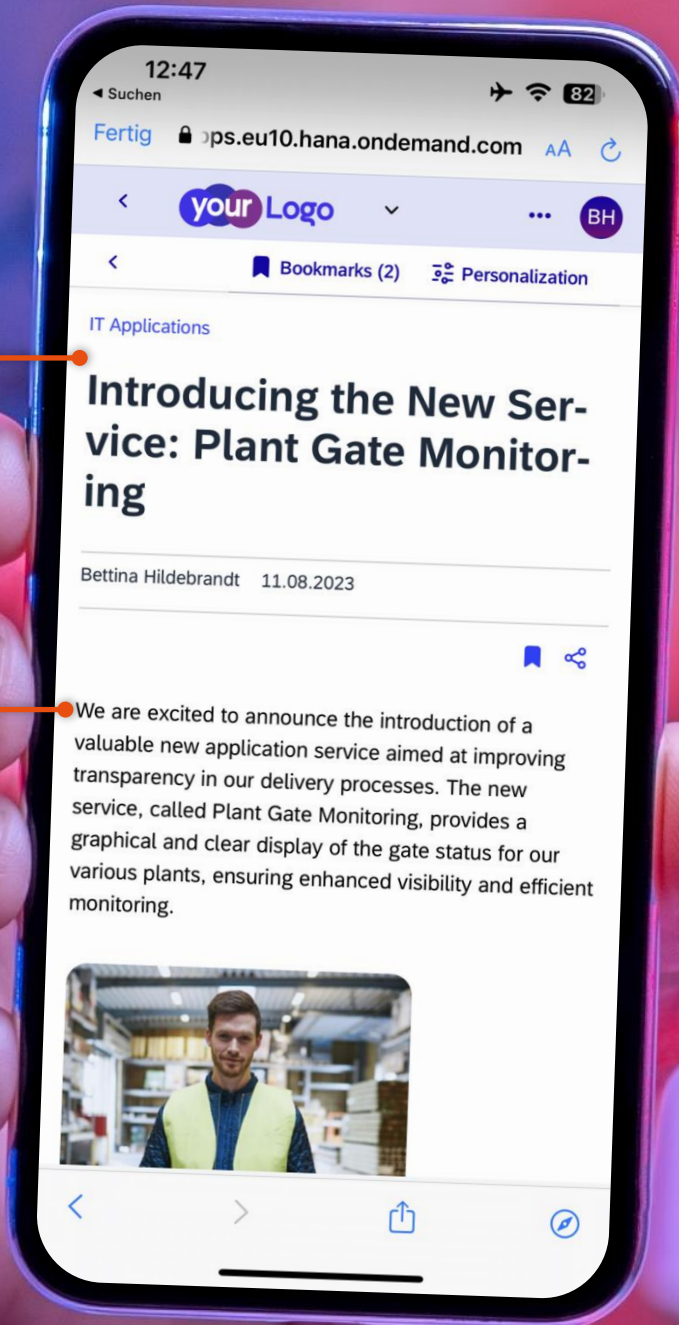


News or information card

Switch between news with a swipe

### News

- > The message display is **automatically adapted** to the smartphone.
- > The click mechanism on the desktop is replaced by a **swipe gesture** to switch between messages.

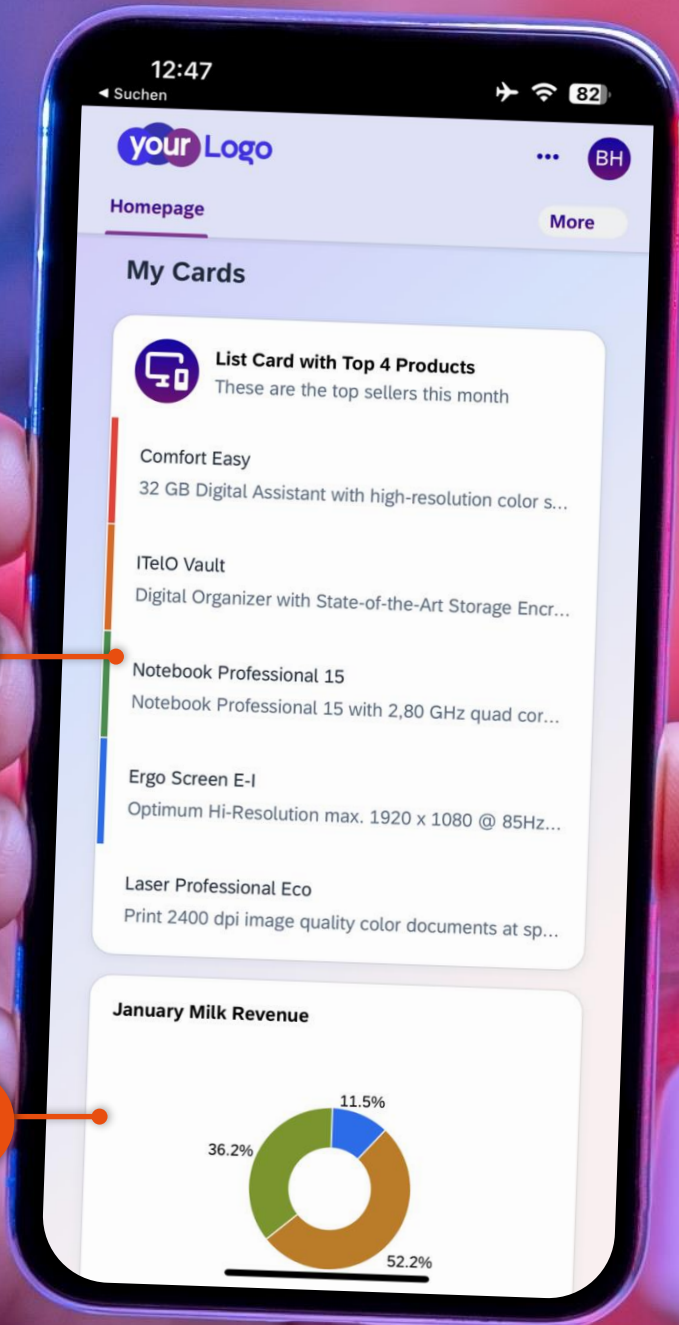


News details or article

Good readability of messages due to structure

### News

- > The news view is **specially designed** for mobile use to ensure good readability.
- > For example, the **font size** can also be changed.
- > News and articles can be designed with **headlines, your own text blocks or images**.
- > This automatically ensures good **legibility**.



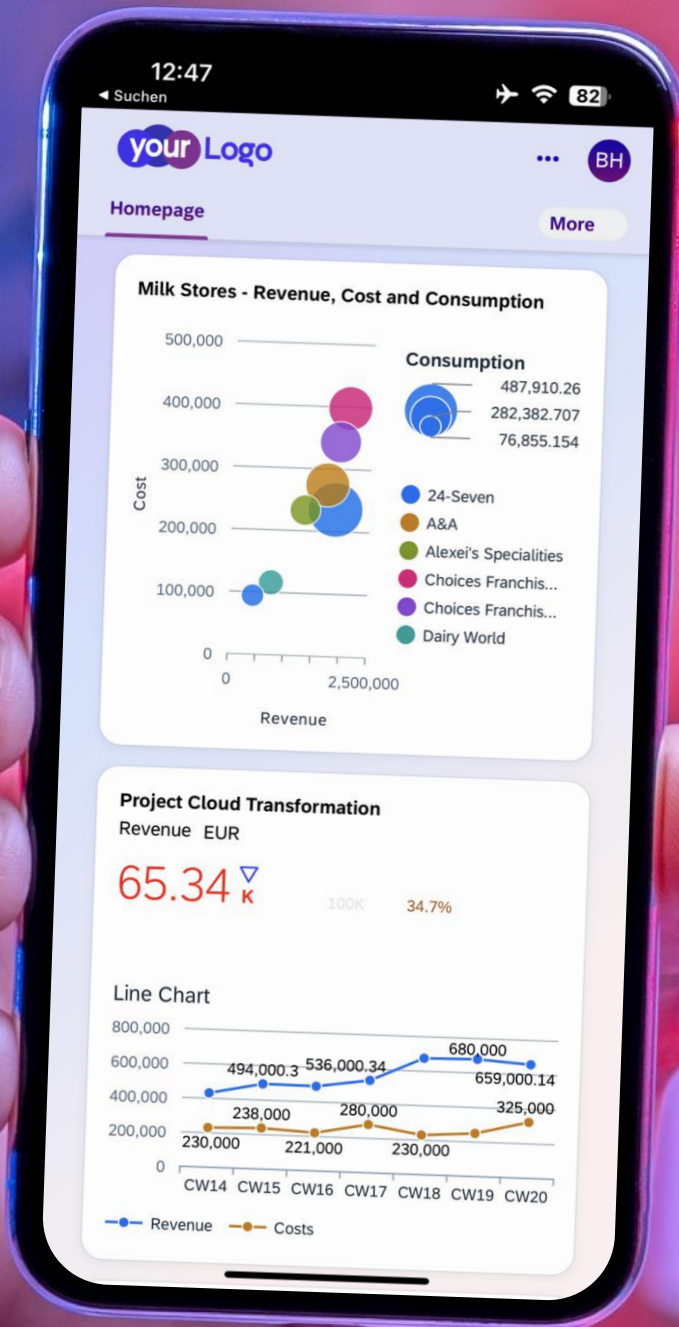
List Card

Analytical Card

### UI Cards

- > The UI Cards offered for SAP integration are also directly **compatible** with a smartphone display





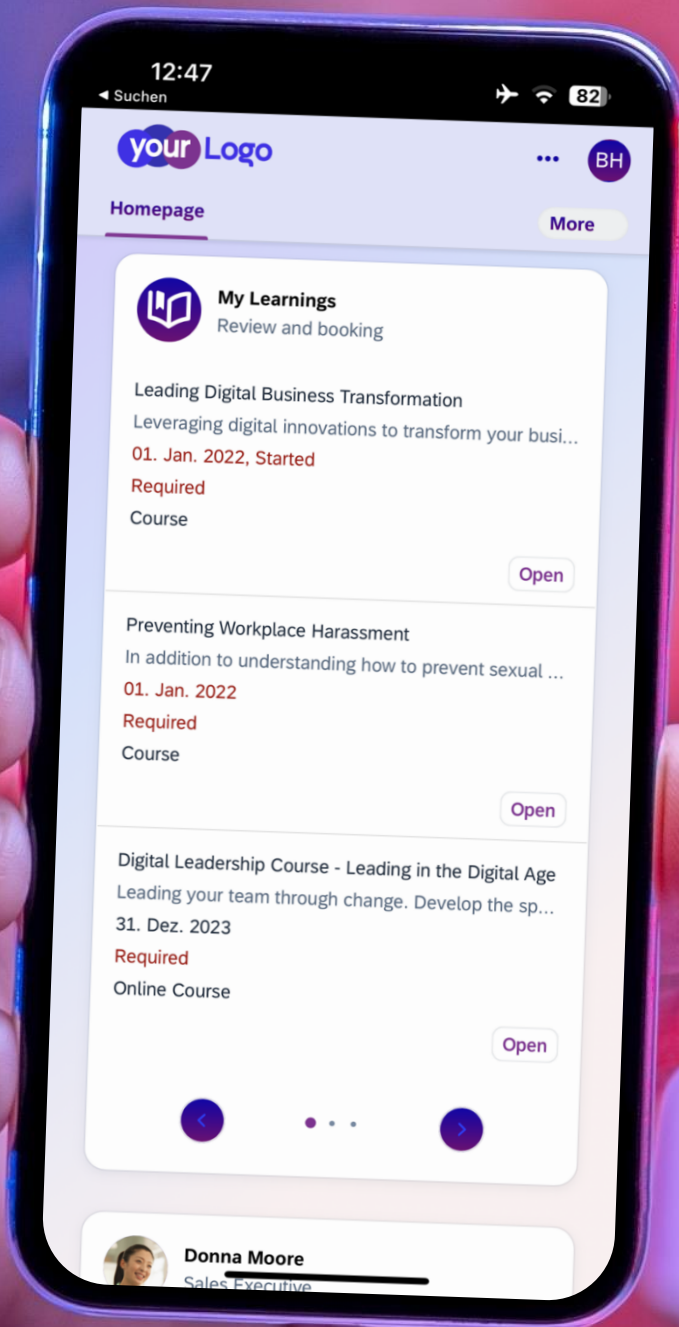
your Logo BH

Homepage More



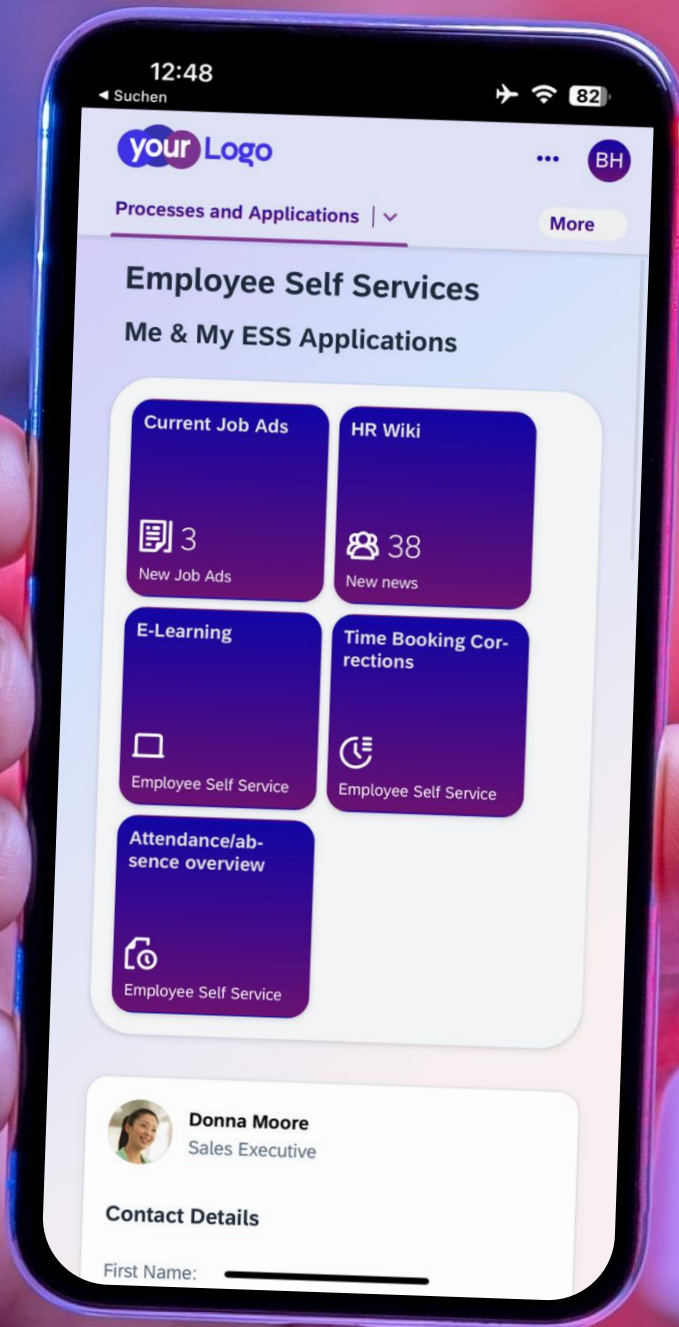
## UI Cards

- > All UI cards are displayed one below the other
- > Automatic **width adjustment** for larger UI cards



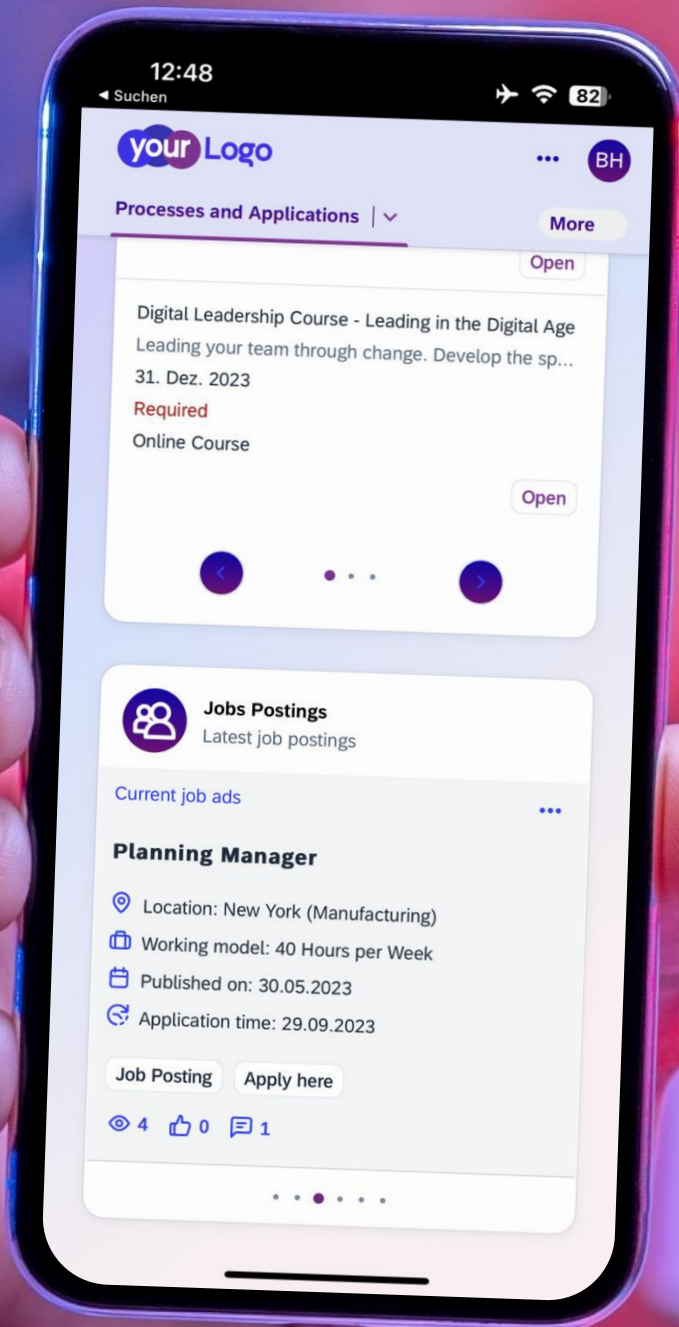
## Training courses

- › This UI Card is an example of a **self-developed** card
- › The **open trainings** of a user are displayed directly



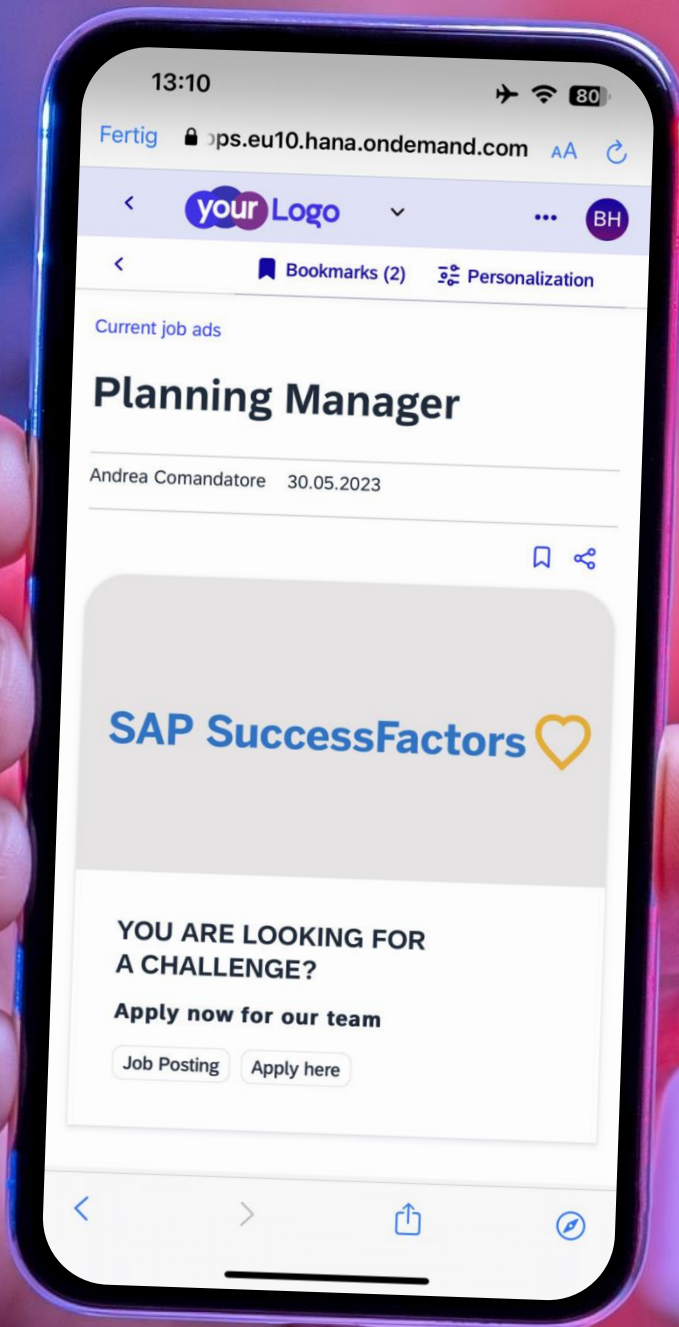
## Self-Services

- › The display for other **overview pages** is analogous to the display of the homepage
- › Pages can be designed in a **mixed look** between tiles and UI cards



## Job market

- › Sites can also offer special **VANTAiO News Manager Cards** to support the respective process
- › Example: **Current job advertisements** from SAP Success Factors
- › All data is **automatically read** from Success Factors and linked to the corresponding News Manager message format



## Job market

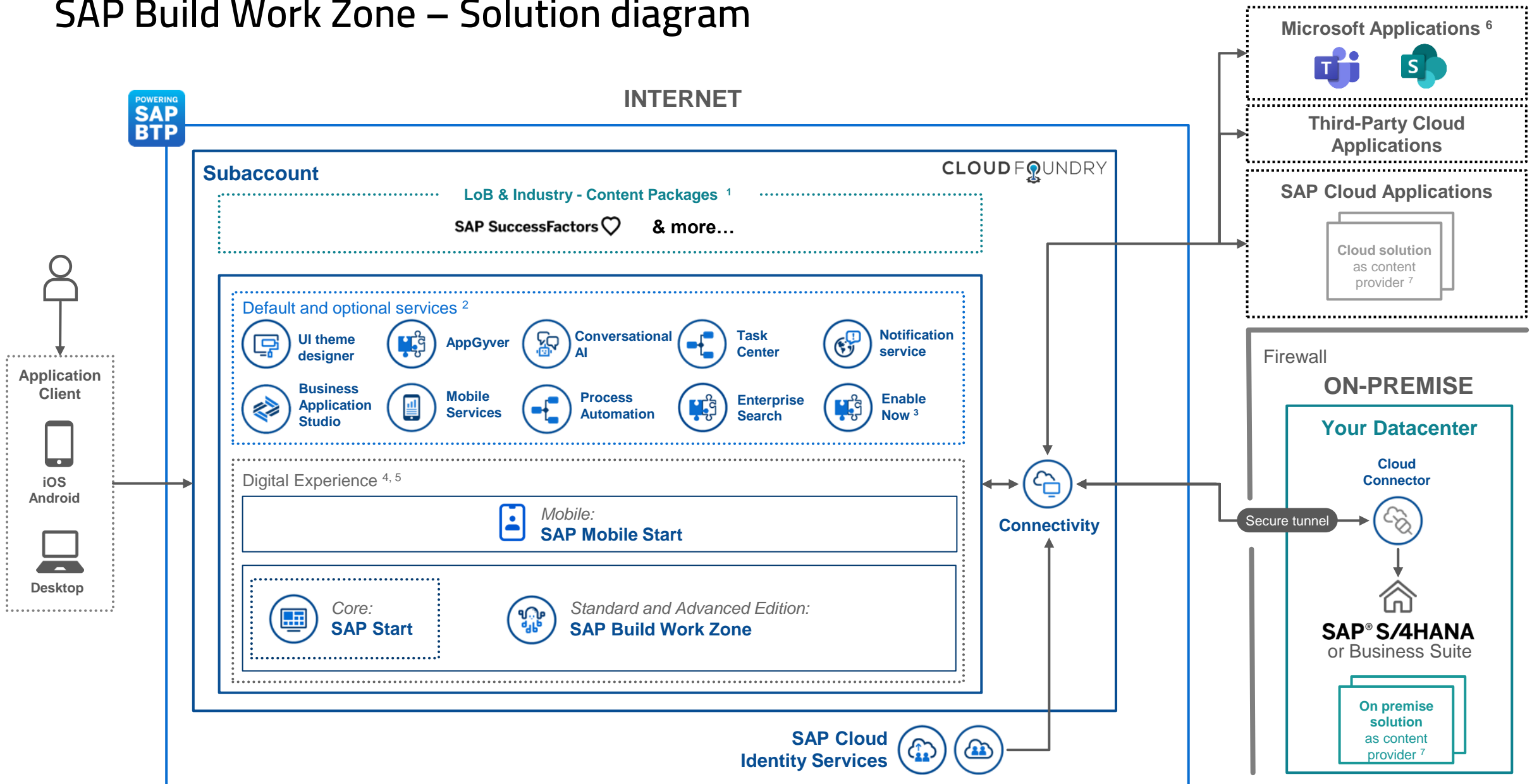
- > The display is **mobile optimized**
- > The **presentation** and **formatting** of the job advertisement can be freely defined

# Summary

## Architecture & comparison of functions

How SAP Work Build Zone ensures greater productivity in everyday working life

# SAP Build Work Zone – Solution diagram



[1] Only SAP SuccessFactors package available today

[3] SAP Enable Now is not part of the SAP BTP Extension Suite

[5] SAP Mobile Start not yet supported for advanced

[7] [List of supported content provider systems](#)

[2] Additional licenses required for some services

[4] Advanced is a superset of standard edition

[6] Integration only supported for advanced

# SAP Build Work Zone

Summarized comparison at the functional level of the two editions

This table compares the various functions of the two SAP Build Work Zone editions.

It should be noted that the two price models differ. The Advanced version offers more features, but is also approx. 2.5 times more expensive.

Nr.	Function	Standard Edition	Advanced Edition
1	Design / Theming	✓	✓
2	Navigation	—	✓
3	Personal homepage	✗	✓
4	Application integration & SSO	✓	✓
5	Content packages	—	✓
6	UI Integration Cards	✓	✓
7	Professional content pages	✗	✓
8	Content widgets	✗	✓
9	Dynamic news	✗	✗
10	Documents	✗	✓
11	Mobile use	✓	✓
12	Global search	—	—
13	Workrooms / work areas	✗	✓

✗ Not available

— Limited available

✓ Available









# SAP Build Work Zone

Summarized comparison at the functional level of the two editions

## SAP Build Work Zone

Standard Edition (1/2)

Nr.	Function	Rating	Comment
1	Design / Theming		Theming is possible by using the UI Theme Designer. In-depth customization is possible via CSS, but without being able to fundamentally change the design defined by the Fiori philosophy.
2	Navigation		Navigation is available, but limited to a maximum of two levels (Spaces and Pages). No expansion is currently planned here.
3	Personal homepage		Only one global start page can be defined. This is valid for all users. However, authorizations are possible, i.e. for example the display of different tiles.
4	Application integration & SSO		Integration of applications and role-based access including single sign-on.
5	Content Packages		Content packages are available to a limited extent.
6	UI Integration Cards		The Standard Edition enables the integration of custom cards, but does not contain any predefined cards for direct use. There are no (content) widgets as in the Advanced Edition. This can be partially compensated for via project work/custom cards.

# SAP Build Work Zone

Summarized comparison at the functional level of the two editions

## SAP Build Work Zone

Standard Edition (2/2)

Nr.	Function	Rating	Comment
7	Specialist content pages	✗	Theming is possible by using the UI Theme Designer. In-depth customization is possible via CSS, but without being able to fundamentally change the design defined by the Fiori philosophy.
8	Content Widgets	✗	Navigation is available, but limited to a maximum of two levels (Spaces and Pages). No expansion is currently planned here.
9	Dynamic news	✗	Only one global start page can be defined. This is valid for all users. However, authorizations are possible, i.e. for example the display of different tiles.
10	Documents	✗	Integration of applications and role-based access including single sign-on.
11	Mobile use	✓	Content packages are available to a limited extent.
12	Globale search	—	The Standard Edition enables the integration of custom cards, but does not contain any predefined cards for direct use. There are no (content) widgets as in the Advanced Edition. This can be partially compensated for via project work/custom cards.
13	Workrooms / work areas	✗	Theming is possible by using the UI Theme Designer. In-depth customization is possible via CSS, but without being able to fundamentally change the design defined by the Fiori philosophy.

# SAP Build Work Zone

Summarized comparison at the functional level of the two editions

## SAP Build Work Zone Advanced Edition (1/2)

Nr.	Function	Rating	Comment
1	Design / Theming	✓	Theming is possible by using the Theme Editor. In-depth customization is possible via CSS, but without being able to fundamentally change the basic design.
2	Navigation	✓	Limited to three levels (Menu Builder). The navigation depth can be extended by using the workspaces.
3	Personal homepage	✓	The Advanced Edition includes a personalizable page (My Workplace) for the personalization of apps, cards and content. There is also a bookmark function for content/documents. It is not possible to save and share report configuration variants.
4	Application integration & SSO	✓	Integration of applications and role-based access including single sign-on.
5	Content Packages	—	Some content packages are available for SAP products, such as Success Factors. However, these are not available for SAP HCM.
6	UI Integration Cards	✓	The Advanced Edition supports the UI Integration Cards in all variants.

# SAP Build Work Zone

Summarized comparison at the functional level of the two editions

## SAP Build Work Zone Advanced Edition (2/2)

Nr.	Function	Rating	Comment
7	Professional content pages	✓	Flexible design of content pages with various (content) widgets of the integrated page builder.
8	Content widgets	✓	In addition to the tiles and cards (with predefined LOB content), the Advanced Edition also contains various content widgets for maintaining content on a Work Zone page.
9	Dynamic news	✗	The Advanced Edition does not include news management. This functionality can be compensated by the VANTAiO News Manager add-on.
10	Documents	✓	The Advanced Edition includes integrated document management with document preview and a wide range of functions.
11	Mobile use	✓	Native SAP Build Work Zone app for iOS and Android.
12	Globale search	—	Standard search finds Work Zone Web content/documents, Enterprise Search for S/4HANA business objects can be integrated as an option. The search cannot be extended to include custom or external content.
13	Workrooms / work areas	✓	Comprehensive options for providing public and private workspaces based on various templates.

# Thank you for your interest.

Follow us on social media!




VANTAiO GmbH & Co. KG  
Rheinstraße 4N / 55116 Mainz  
Germany

T +49 6131 62228-0 / F -70  
www.vantaio.com  
kontakt@vantaio.com



Do you have any questions or would you like to find out more? Please feel free to contact me!

MARKUS MARENBACH,  
DIGITAL WORKPLACE EXPERT

 +49 6131 62 22 80

 kontakt@vantaio.com

 <https://www.linkedin.com/in/mmarenbach/>

© 2025 VANTAiO GmbH & Co. KG

No part of this publication may be reproduced or transmitted in any form or for any purpose without the express written permission of VANTAiO GmbH. Information contained in this publication is subject to change without notice.

Information contained in this publication is subject to change without notice. This information is provided by VANTAiO and is for information purposes only.

VANTAiO assumes no liability or warranty for errors or omissions in this publication. VANTAiO is only responsible for products and services in accordance with the terms expressly set out in the agreement for the respective products and services. No further liability arises from the information contained in this publication.